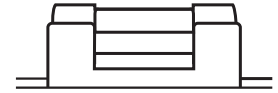
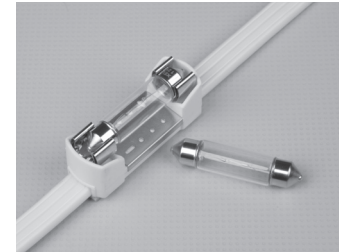
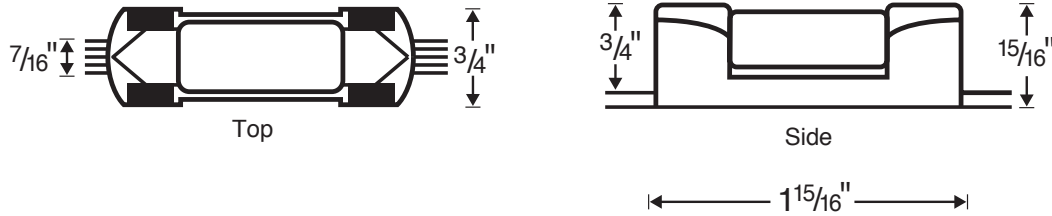


BRITE STRIP



SCHEMATICS:



DESCRIPTION:

Flexible light strip featuring field cuttability and Xenon festoon, Incandescent festoon, and Halogen MR-11 bulb options. Molded festoon bulb sockets located at two, three and four bulbs per foot on listed 12AWG wire. All festoon bulbs are offered in either clear or frosted options. Xenon bulbs are rated at a 10,000 avg. bulb life. Light strip is dimmable with any bulb mentioned above and appropriate dimming device. See instructions for complete specifications and installation details.

APPLICATIONS

- ▶ Ceiling coves
- ▶ Wall coves
- ▶ Display cases
- ▶ Under cabinet lighting
- ▶ Shelf lighting
- ▶ Sign backlighting
- ▶ Architectural accents
- ▶ Decorative accents

FEATURES

- ▶ Flexible design allows unlimited applications
- ▶ Parallel wiring means loss of a bulb does not affect remaining strip
- ▶ "Snap In" bulb socket design for ease of bulb replacement
- ▶ Field cuttable power strip for custom, hard to estimate applications
- ▶ Simple, safe, effective standard terminal blocks
- ▶ Each socket ships complete with 3M double-sided mounting tape
- ▶ Optional nail clips for difficult mounting applications
- ▶ Reflectors boost light output 50% at 16" cabinet-to-counter dimension

ORDERING LOGIC:

LBL-Z-XXYY

Z = BULB SPACING

- 2 = 2 bulbs/foot
- 3 = 3 bulbs/foot
- 4 = 4 bulbs/foot

XX = STRIP LENGTH

- Custom Length or
- 100 = 100 foot spool

YY = LIGHT STRIP COLOR

- WH = White
- BK = Black

SPECIFICATIONS:

Voltage	12V or 24V "Festoon" bulbs, and 12V or 24V MR11 Bulbs Use "TR" or "TECLT" transformers. See instructions for details.
Bulb Specifications	5 watt and 10 watt Festoon incandescent or "Xenon" bulbs (12V or 24V), 20 watt MR11 bulbs (12V or 24V)
Average Bulb Life	10,000 hours (festoon); 2,500 hours (MR11)
Bulb Spacing	1" between bulb sockets (4 bulbs per foot) 2" between bulb sockets (3 bulbs per foot) 4" between bulb sockets (2 bulbs per foot)
Bulb Color	Clear or frosted (All types and voltages of festoon bulbs. Clear only for MR-11).
Bulb Connection	Horizontal individual sockets parallel wired to flat power wire
Wire and Socket Color	White or Black
Maximum Single Run	A maximum total of: 480 watts on a 24 volt system or 240 watts on a 12 volt system
Agency Approval	ETL listed for indoor and other dry location use. Requires a listed transformer with secondary circuit protection not to exceed 20 amps.



PROJECT:	TYPE:
NOTES:	