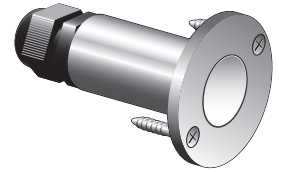
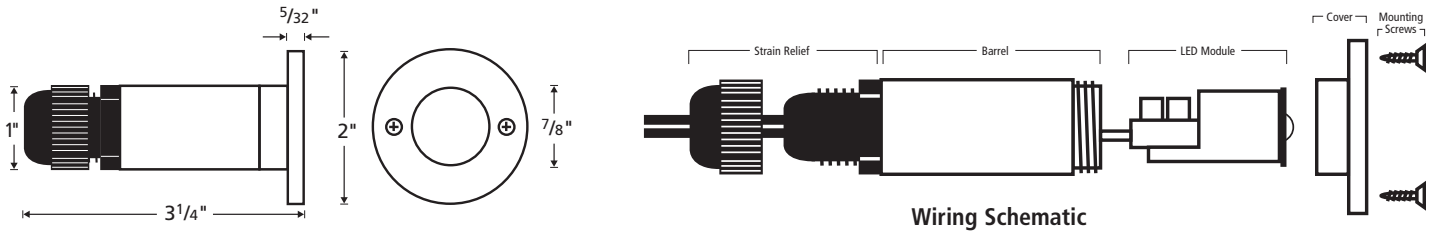


# LED MiniDisc Light



## SCHEMATICS:



## DESCRIPTION:

Die cast aluminum, or stainless steel, recessed mini LED accent fixture with prism cover design. Low 0.54 watt LED provides 80% energy savings vs. Incandescent technology. Fixture circuitry allows expandable system design from 1 to 100 fixtures per Class 2 LED driver. UL listed for in-wall, in-floor, outdoor wet and outdoor burial applications. Offered in six LED colors and four fixture finishes.

### APPLICATIONS

- ▶ Steps
- ▶ Aisles
- ▶ Paths
- ▶ Driveways
- ▶ Direction Lighting
- ▶ Information Lighting
- ▶ Decorative Lighting
- ▶ Merchandising
- ▶ Landscape Accents

### FEATURES

- ▶ 60,000 hour LED life
- ▶ Low energy requirements of 0.54 watt per fixture
- ▶ UL listed for in-wall, in-floor, outdoor wet, and outdoor burial applications
- ▶ Up to 100 fixtures per power supply
- ▶ 5 cover colors: Aluminum, Black, White, Bronze, Stainless Steel
- ▶ 6 LED colors: Warm White, Cool White, Green, Blue, Red, Amber
- ▶ Fits in any 1" diameter hole, 3-1/2" long
- ▶ Safe 12 volt, Class 2 power supply (ordered separately)

## ORDERING LOGIC:

LEDMD-XX-YY

### XX = LED COLOR

WW = Warm White  
 CW = Cool White  
 BL = Blue  
 GR = Green  
 AM = Amber  
 RD = Red

### YY = FIXTURE FINISH

AL = Aluminum  
 BZ = Bronze  
 WH = White  
 BK = Black  
 SS = Stainless Steel

## SPECIFICATIONS:

<b>Voltage</b>	12VDC, Requires NSL LED Driver Model #LEDDR-12-60W
<b>Fixture Energy Rating</b>	12VDC, 45mA, 0.54 watts
<b>LED Color Temperature</b>	Warm White 3300K +/-200K, Cool White 7000K +/-200K
<b>Average LED Life</b>	60,000 Hours
<b>LED Colors</b>	Warm White, Cool White, Green, Blue, Red, Amber
<b>Cover Finish</b>	Aluminum, White, Bronze, Black, Stainless Steel
<b>Barrel Finish</b>	Aluminum, White, Bronze, Black, Stainless Steel
<b>Packaging</b>	Individually packaged in 2-color corrugated box.
<b>Construction</b>	Both cover and barrel are die cast aluminum for corrosion protection, strength, weight, and consistency of finish.
<b>Lens</b>	Frosted Tempered Glass
<b>Wiring Options</b>	Each LED Driver can power up to 100 MiniDisc Lights by parallel wiring ("daisy chain") between fixtures. One wire completes chain. No custom cord required. NOTE: Use LW-18G-CL2 for all in-wall applications. Use LW-18G-BUR for all outdoor and burial applications.
<b>Dimming</b>	Not for use with dimmers.
<b>Agency Approval</b>	UL listed and labeled for wet, IC, ceiling, and direct burial applications.



<b>PROJECT:</b>	<b>TYPE:</b>
<b>NOTES:</b>	