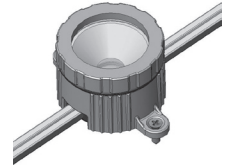
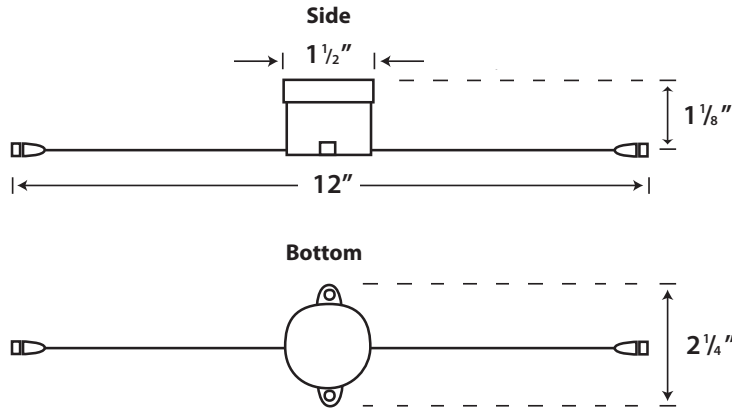


LED SURFACE STAR



SCHEMATICS:



DESCRIPTION:

Die cast aluminum 1.2 watt surface mounted mini LED accent fixture. 80% energy savings vs. Incandescent technology. Fixture circuitry allows expandable system design from 1 to 45 fixtures per LED driver with Class 2 safety and 'plug-and-play' pre-molded extension cords. UL listed Wet Location. Offered in five LED colors and four fixture finishes.

APPLICATIONS

- ▶ Handrails
- ▶ Cabinets
- ▶ Decks
- ▶ Gazebos
- ▶ Trellis
- ▶ Posts
- ▶ Architectural Accents
- ▶ Landscape Accents
- ▶ Merchandising

FEATURES

- ▶ 60,000 hour LED life
- ▶ Low 1.2W energy usage
- ▶ UL Listed for indoor & outdoor applications
- ▶ Up to 45 fixtures per LED Driver
- ▶ 4 Fixture finishes: White, Bronze, Aluminum, Black
- ▶ 5 LED Colors: White, Green, Blue, Red, Amber
- ▶ Safe 12 Volt, Class 2 power supply (ordered separately)
- ▶ Easy surface mount with included screws
- ▶ Easy wiring with pre-molded extension cords
- ▶ Compact 1.5" diameter by 1.125" high design

ORDERING LOGIC:

LEDSS-XX-YY

XX = LED COLOR

W = White
GR = Green
BL = Blue
RD = Red
AM = Amber

YY = FIXTURE FINISH

WH = White
BZ = Bronze
BK = Black
AL = Aluminum

SPECIFICATIONS:

Voltage	12VDC, Requires NSL LED Driver Model #LEDSS-12-60W
Fixture Energy Rating	12VDC, 100mA, 1.2 watts
LED Color Temperature	3800K +/-200K
Average LED Life	60,000 Hours
LED Colors	White, Green, Blue, Red, Amber
Finish	White, Bronze, Aluminum, Black
Packaging	Individually packaged in 2-color corrugated box.
Construction	Die cast aluminum for corrosion protection, strength, weight, and consistency of finish.
Lens	Clear Tempered Glass
Wiring Options	Each LED Driver can power up to 45 LED Surface Stars.
Dimming	Not for use with dimmers.
Agency Approval	UL listed and labeled for surface mounted wall, ceiling, cabinet, under-cabinet, and wet locations.



PROJECT:	TYPE:
NOTES:	