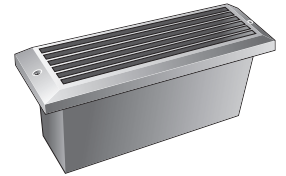
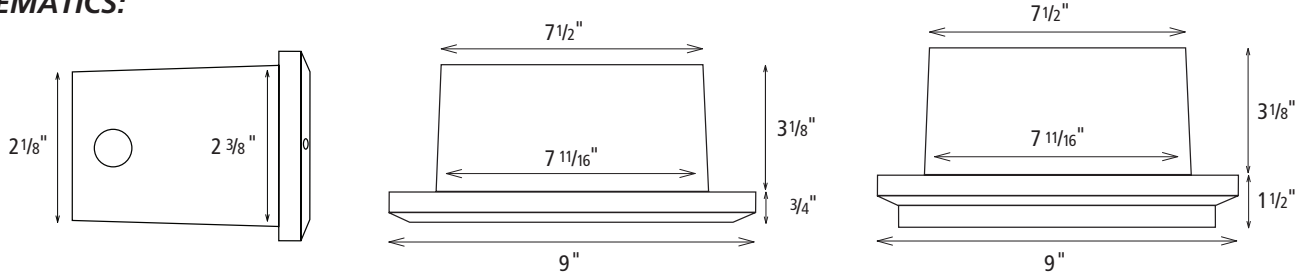


XENON BRICK LIGHT



SCHEMATICS:



LOUVER, PRISM

SCOOP

DESCRIPTION:

Die cast aluminum wall mount Xenon light fixture fits standard brick void and consumes 18 watts. 110VAC input and output of fixture up to 66 fixtures per 15A tap. 10,000 hour average Xenon bulb life of 2800K color temperature. Offered in three cover styles and four fixture finishes. UL listed Wet Location for all interior and exterior wall and concrete pour applications. Dimmable with a low voltage electronic dimmer.

APPLICATIONS

- ▶ Brick walls
- ▶ Interior steps
- ▶ Exterior steps
- ▶ Aisles
- ▶ Halls
- ▶ Paths
- ▶ Patio lighting
- ▶ Entry lighting
- ▶ Post lighting

FEATURES

- ▶ 18 watts per fixture energy usage
- ▶ Up to 66 fixtures per 110VAC tap
- ▶ 3 cover designs: Louver, Prism and Scoop
- ▶ 4 cover color options: White, Bronze, Black or Aluminum
- ▶ 10,000-hour average Xenon bulb life
- ▶ 110V power input
- ▶ Integral 12VAC transformer in each fixture
- ▶ Die cast aluminum can and cover; suitable for concrete pour
- ▶ UL listed Wet Location for all interior and exterior wall and concrete pour applications.
- ▶ Dimmable with a low voltage electronic dimmer.
- ▶ Frosted glass lens
- ▶ 110V push-in connectors included for ease of power input
- ▶ Each fixture ships complete with can and cover

ORDERING LOGIC:

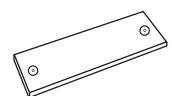
XBL-Z-YY

Z = FIXTURE TYPE

L = Louver Cover
S = Scoop Cover
P = Prism Cover

YY = FIXTURE FINISH

WH = White
BZ = Bronze
BK = Black
AL = Aluminum



BL-CC
Brick Light Concrete Cap
Required for all concrete pour and brick wall applications.

SPECIFICATIONS:

Voltage	110VAC power input. Integral class 2 12V transformer per fixture.
Fixture Energy Rating	110VAC, 170mA, 18 watts
Average Bulb Life	10,000 hours
Color Temperature	2800K +/- 200K
Cover Finish	White, bronze, aluminum, black
Can Finish	White with white reflector
Packaging	Individually packaged in 2-color corrugated box.
Construction	Both cover and can are die cast aluminum for corrosion protection, strength, weight, and consistency of finish.
Lens	Frosted tempered glass
Wiring Options	110V can be parallel wired ("daisy chained") up to 66 fixtures per tap. Check local code and NEC for wiring selection
Dimming	Dimmable with a low voltage electronic dimmer.
Agency Approval	UL listed Wet Location for all interior and exterior wall and concrete pour applications.



PROJECT:

TYPE:

NOTES: