

# Low-Voltage Touch Panel Dimmer

MODEL: LT-032-W

Product  
Specifications

## Summary

The Low Voltage Touch Panel Dimmer combines the simplicity to use with the convenience of wall mounting and easy installation. It is designed for dimming of constant voltage, single color LED products such as LED Tape Light, LED eSTRIP, LED Globe Light, LED Hard Strip and many more.

## Technical Parameters

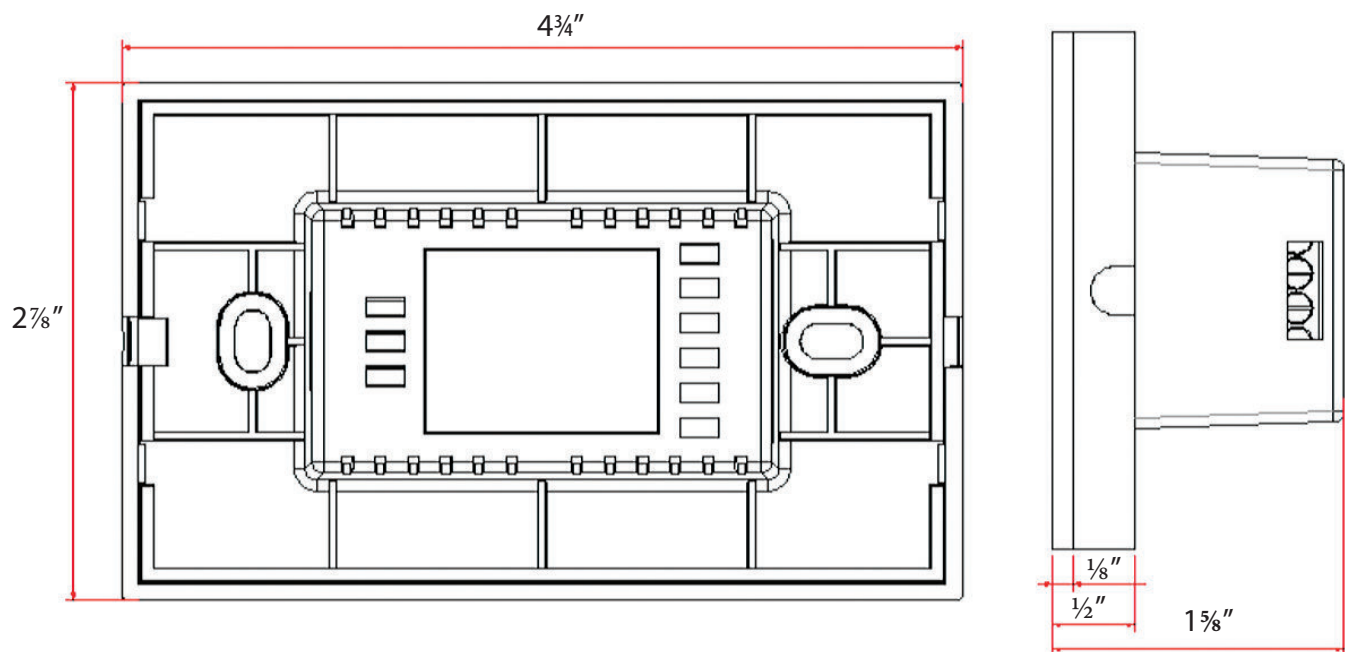
- Working temperature: -20-60°
- Supply voltage: 12V/24V DC
- Output voltage: 12V/24V DC
- Output: 1 channel
- Connection mode: common anode
- External dimension: L2 $\frac{7}{8}$ " X W4 $\frac{3}{4}$ " X H1 $\frac{5}{8}$ "
- Packing size: L5 $\frac{7}{8}$ " X W4" X 2 $\frac{1}{4}$ "
- Net weight: 0.33lbs
- Gross weight: 0.45lbs
- Static power consumption: <1W
- Output current: <8A
- Output power: 12V<96W, 24V<192W



## Safety Instructions

1. Save these instructions.
2. Read all instructions thoroughly before commencing assembly or installation.
3. For indoor use only.
4. This product must be installed in accordance with the applicable installation code by a person familiar with the construction and operation of the product and the hazards involved.
5. Use only Class 2 non-dimmable power supplies.
6. Turn off all electrical power before modifying lighting system in any way.

## External Dimensions



## Interface Specifications

Ports 1, 2-output ports to connect LED lights.

Ports 3, 4- Input 12V/24V DC.



## Instructions



Quick brightness adjustment 0-100%



Turn on/off LED lights in any state.

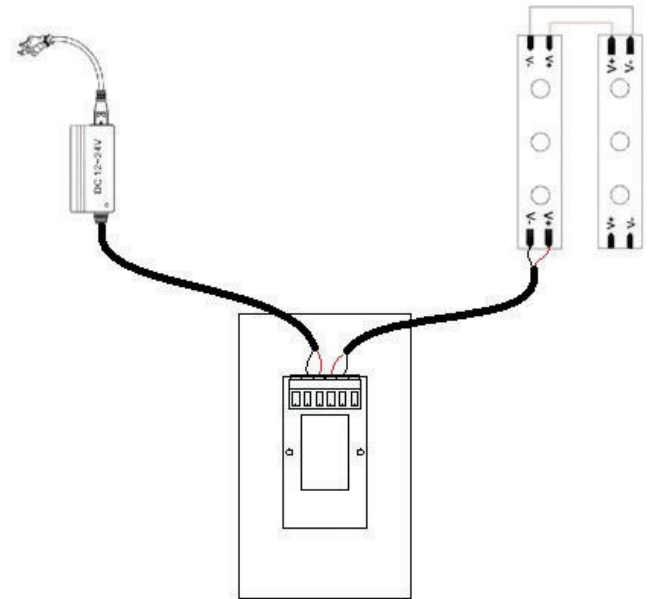


Reduce brightness.



Increase brightness.

## Typical Application



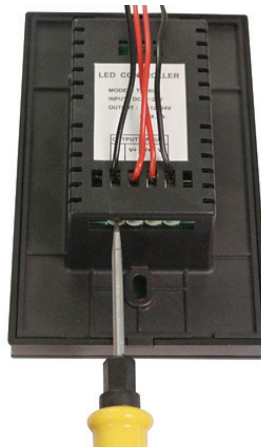
## Installation

### 1. WIRING

Connect wires (load side first) as follows:

Ports 1, 2-output ports to connect LED lights.

Ports 3, 4- Input 12V/24V DC.



### 2. OPEN THE PANEL

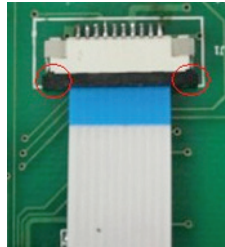
Using a flat screwdriver, gently pry open the back panel.



## 3. INSTALL PANEL BASE

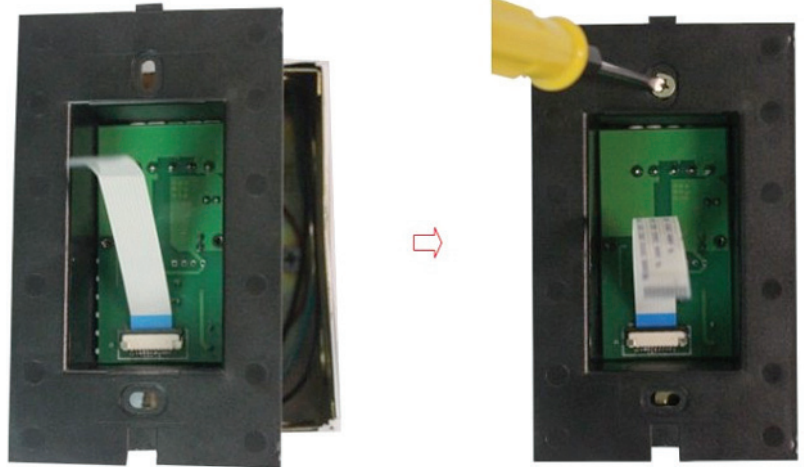
### Step 1:

On the front panel, pull the edges of black insert of the connector (marked with red circles), and remove the ribbon cable.



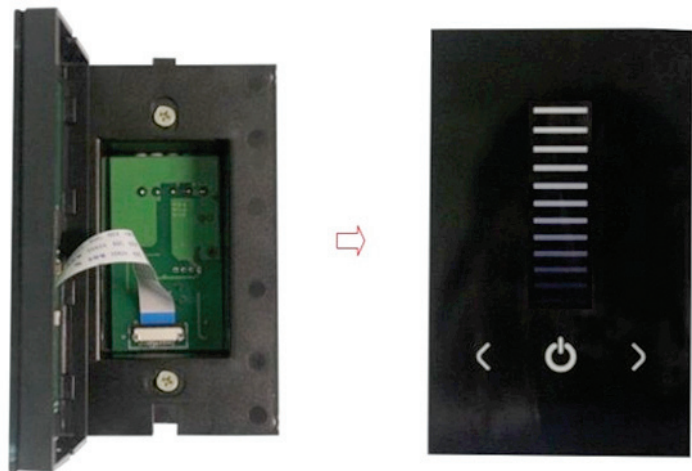
### Step 2:

Mount the panel base into the 2x4 switch or utility box.



## 4. MOUNT THE FRONT PANEL

Re-connect the ribbon cable (blue side up) and mount the controller front panel.



## Notes

1. Use only Class 2, non-dimmable 24V DC power supplies.
2. Please avoid short-circuits during installation.