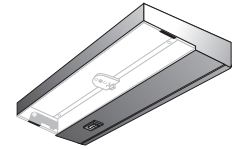
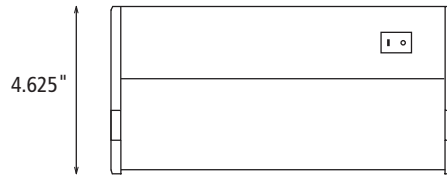
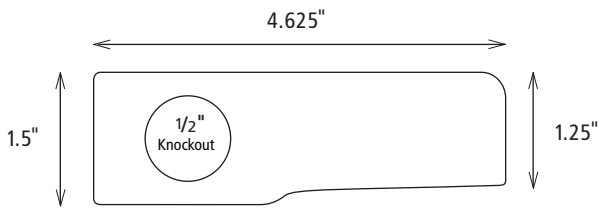


# LED TASK STAR

**DIMMABLE!**



**SCHEMATICS:**



- ← 9" → LTS-1-XX/YY      One LED Module LED Task Star
- ← 17.5" → LTS-2-XX/YY      Two LED Module LED Task Star
- ← 26" → LTS-3-XX/YY      Three LED Module LED Task Star
- ← 34.5" → LTS-4-XX/YY      Four LED Module LED Task Star
- ← 38.5" → LTS-5-XX/YY      Five LED Module LED Task Star

**DESCRIPTION:**

Completely self-contained under counter light fixture with replaceable 120VDC LED Modules included. Dimmable. Twice the light output as Xenon/Halogen technology with 72% energy savings. 120VAC in and out up to 150 replaceable LED Modules per 15A tap. Numerous contractor preferred 1/2" knockouts in each fixture. Offered in five sizes and four fixture finishes. UL Listed Damp Location.

**APPLICATIONS**

- ▶ Under-cabinet task light
- ▶ Work stations
- ▶ Over-cabinet accent light
- ▶ Laboratories
- ▶ Display cases and exhibits
- ▶ Merchandising
- ▶ Indirect accent light
- ▶ Wall units and bars

**FEATURES**

- Replaceable 120VDC LED Modules
- Twice the light output of Xenon/Halogen technology
- Pleasingly warm color temperature of 3100K
- Dimmable
- Captive screw mounting
- Energy usage from 5.2 to 26.0 watts per fixture
- Maximum of 150 LED Modules per 120VAC, 15AMP circuit
- New low-profile lens release
- Long life rectifier included. No integral LED driver required
- 120VAC in and out of fixture
- Uses standard household Romex™ wire input/output
- Push-in connectors included for ease of power input
- Light, efficient aluminum frame stamped for 120V hard wire input
- Available in 4 colors: Aluminum, Black, Bronze, and White
- Available in five fixture lengths
- Numerous 1/2" knockouts



**ORDERING LOGIC:**

LTS-Z-XX/YY

**Z = NUMBER OF LED MODULES**  
1, 2, 3, 4, 5

**XX = TYPE**  
HW = Hard Wire

**YY = FIXTURE FINISH**  
WH = White      BK = Black  
BZ = Bronze      AL = Aluminum

**SPECIFICATIONS:**

|                              |  |
|------------------------------|--|
| <b>Voltage</b>               | 120VAC input   |
| <b>Energy Usage</b>          | 1 module = 5.2 watts, 2 module = 10.4 watts, 3 module = 15.6 watts, 4 module = 20.8 watts, 5 module = 26 watts                               |
| <b>LED Color Temperature</b> | 3100K +/- 200K   |
| <b>LED Module Life</b>       | Replaceable 120VDC LED Module rated at 40,000 hours  |
| <b>Fixture Finish</b>        | White or black powder coating; bronze, or natural aluminum   |
| <b>Construction</b>          | Aluminum extruded frame with injection molded ends for low fixture weight and consistency of finish.   |
| <b>Lens</b>                  | Frosted glass for even light distribution. Hinged to aluminum frame for ease of fixture installation and security. Low-profile lens release. |
| <b>Wiring Options</b>        | Hardwire can be parallel wired ("daisy chained") up to 150 LED Modules.  |
| <b>Dimming</b>               | Dimmable. See instructions for details.  |
| <b>Agency Approval</b>       | UL listed and labeled. Damp location.  |
| <b>Warranty</b>              | Three years. See website for details.  |



|                 |              |
|-----------------|--------------|
| <b>PROJECT:</b> | <b>TYPE:</b> |
| <b>NOTES:</b>   |              |