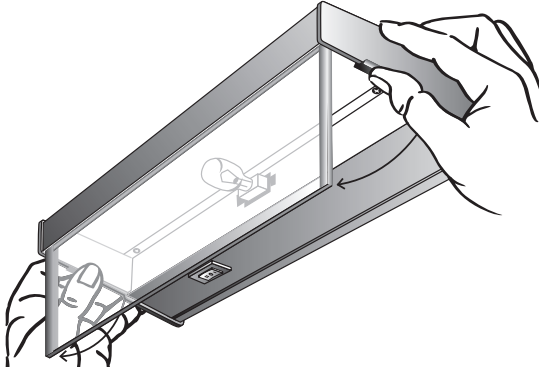


MOUNTING AND WIRING INSTRUCTIONS

Caution! Make sure fixture is not plugged in, or receiving power in any way.

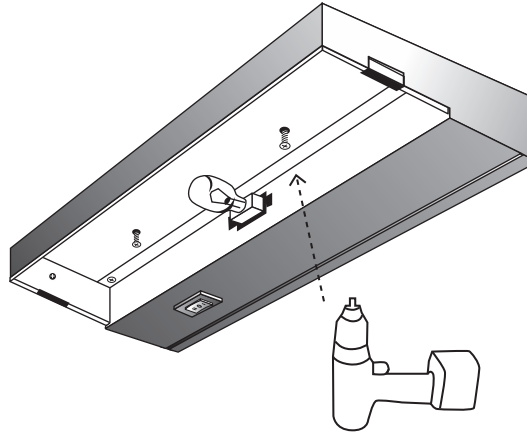
1. First release glass diffuser lens by pressing in tabs on each end of the XTL. This loosens the glass lens which will swing down.



NOTE:

Four and five bulb units have magnet(s) on center of lens which will require a gentle pry downward with a small screwdriver on the lens to release.

2. Easy mounting is assured by simply positioning fixture on mounting surface and driving the two pre-positioned screws into underside of cabinet with a power screwdriver. See below.



NOTE:

For wall or under cabinet mount only.

3. Check all connections. Close wiring cover and replace cover set screws. Make sure cover is secure before closing diffuser.
4. Replace glass diffuser by swinging glass lens up into position.
5. Insert grounded plug into appropriate 110V receptacle. Test fixture in both "HI" and "LOW" switch settings.

RELAMPING INSTRUCTIONS

CAUTION! If unit has recently been operating, glass, bulb(s), and fixture are hot! Turn off fixture and allow it to cool for 15 minutes before relamping.

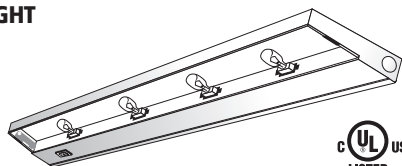
CAUTION! Always replace bulbs with fixture switch in the OFF position.

NOTE: Using a thin pair of gloves during this procedure will eliminate fingerprints on glass lens and Xenon bulbs.

1. Release glass diffuser lens by pressing in tabs on each end of the XTL. This loosens the glass lens which will swing down.
2. Remove Xenon bulbs by pulling directly outward from bulb socket. Replace with 18 watt, 12 volt, Xenon wedge based bulb only (NSL part no. XEN-12-18W)! Push bulb directly into socket until bulb base is firmly seated in bulb socket.
3. Replace glass diffuser by swinging glass lens up into position.

OTHER XENON PRODUCTS BY NSL

XENON TASK LIGHT — HARDWIRE



UL
LISTED
Damp Locations

The perfect under-cabinet task light fixture. Brighter than fluorescent, a fraction the heat of halogen, and four times the bulb life of halogen.

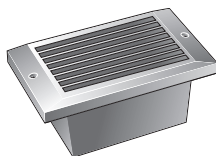
XENON MINI LIGHT



ETL
US

A completely new design of the industry standard "hockey puck". A fraction the heat of a halogen, four times the bulb life of halogen, similar bright white light.

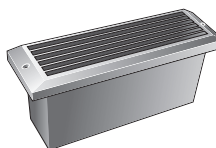
XENON STEP LIGHT



UL
LISTED
Wet, IC, Ceiling
& Shower
Locations

The brightest, longest-lasting 110V Step Light with aluminum die cast construction in three cover designs and four colors.

XENON BRICK LIGHT



UL
LISTED
Wet, IC, Ceiling
& Shower
Locations

Longest-lasting 110V Brick Light with aluminum die cast brick-size construction in three cover designs and four colors.

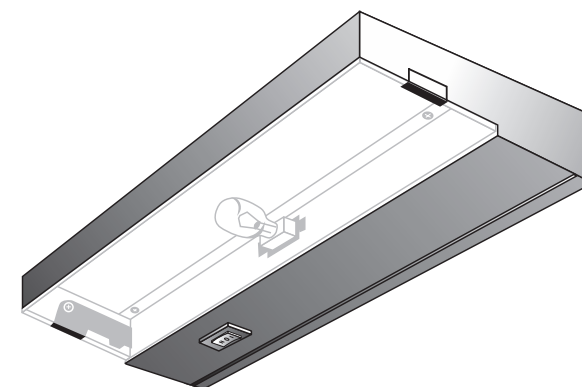
NSL
NATIONAL SPECIALTY LIGHTING
YOUR TRUSTED LIGHTING PARTNER

INSTALLATION INSTRUCTIONS

XENON TASK LIGHT

Self-Contained Task Light Fixture

POWER CORD VERSION



Under cabinet task light

Bright enough for writing and detail work

High-low dimmer switch

Cooler and safer than halogen lights

10,000 hour bulb life

NSL
NATIONAL SPECIALTY LIGHTING
YOUR TRUSTED LIGHTING PARTNER

UL
LISTED