

# 120V AC LED ESTRIP

**NSL**  
NATIONAL SPECIALTY LIGHTING  
YOUR TRUSTED LIGHTING PARTNER

## Bright, easy to install & made to measure

An ideal solution for accent lighting in residential, commercial and retail applications, our 120V AC LED ESTRIP can be easily installed without the need of any additional driver, in indoor and outdoor applications. Available in (pre-assembled) custom lengths, this product allows for longer runs with a maximum of 50M (164FT), making it the perfect solution to delineate architectural features on a building, archway or bridge.

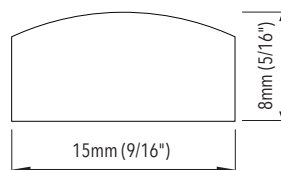
### FEATURES

- 120V AC input voltage
- Low power consumption: 12W/M (3.7W/FT)
- Cutable every 10CM (3 15/16") - factory only
- Luminous flux: 1200LM/M (366LM/FT)
- Color temperatures: 3000K, 4000K, 6000K
- Dimmable with TRIAC dimmers
- Waterproof - IP65
- Available with plug and cord
- 2-year limited warranty

### APPLICATIONS

- Building outlines
- Signage
- Decks
- Architectural features

### DIMENSIONAL DIAGRAM



# 120V AC LED ESTRIP

## Easy Installation

Cuttable every 10CM (3 15/16")

Only available in factory pre-assembled custom lengths

## Electrical

120V AC. 12W/M (3.7W/FT)

## Warranty

**Limited warranty:** This fixture is free from defects in materials and workmanship for a period of 2 years from date of purchase.

### \*Please note:

1. Custom lengths to be ordered in feet.
2. Each custom length comes with Power Plug (YH-POWER PLUG-15A) or Hardwire Power Cord (YH-2835D-PWP) and End Cap (YH-ENDCAP) factory pre-assembled. The Power Plug / Hardwire Power Cord and End Cap need to be ordered separately.

## SPECIFICATIONS\*

Product Code	YH-HRF50D120S-283580WW (3000K) YH-HRF50D120S-283580NW (4000K) YH-HRF50D120S-283580W (6000K)
Color Temperature	3000K, 4000K, 6000K
Input Voltage	120V AC
Power Consumption (W)	12W/M (3.7W/FT)
Luminous Flux	1200LM/M (366LM/FT)
LEDs	SMD2835
Color Rendering Index	80
Max Length	50M (164FT)
Life Span (hours)	30,000
Cuttable	Cuttable every 10CM (3 15/16") - factory only
Approvals	cETLus

## Accessories



**YH-2835D-PWP**  
15A Hardwire  
Power Cord



**YH-POWERPLUG-15A**  
15A Power Plug



**YH-MC-6IN:** Middle Connector 6IN  
**YH-MC-3FT:** Middle Connector 3FT  
**YH-MC-6FT:** Middle Connector 6FT



**YH-ENDCAP**  
End Cap

## Extrusions



**LV-LB-D3-FR\***

Surface mount aluminum extrusion and frosted PC cover

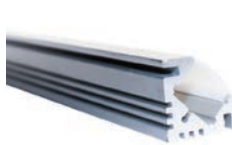
\*Available in 1M (39") and 2M (78") lengths.



**LV-LB-W3-FR\***

Recessed aluminum extrusion and frosted PC cover

\*Available in 1M (39") lengths.



**LV-LB-V3-FR\***

Corner surface mount aluminum extrusion and frosted PC cover

\*Available in 1M (39") lengths.



**LES-STPV-T\***

PVC "U" mounting channel

\*Available in 1M (39") lengths.



**YH-FIXCLIP**

Mounting clips