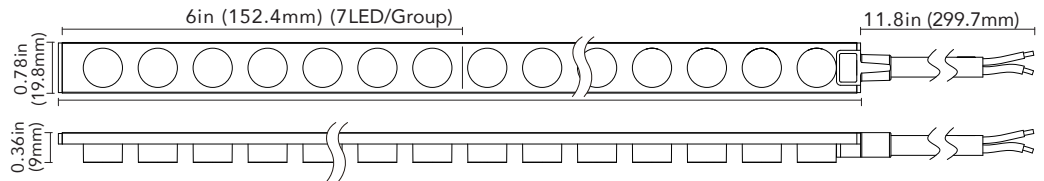


# LED Wall Washer

The LED Wall Washer is the ideal solution for architectural, signage, and landscape lighting applications.



## Features

- Safe 24V DC operation
- Low power consumption: 5.8W/FT
- Suitable for indoor and outdoor use
- Beam angle: 30°
- Available in 2700K, 3000K, 4000K colour temperatures
- Dimmable with dimmable drivers
- Field cuttable every 6". Custom cuts available.
- Long life 30, 000 hours
- cULus certified for wet locations
- 3 year limited warranty

## Specifications

Colour Temperature	2700K, 3000K, 4000K
Input Voltage	24V DC
Power Consumption (W)	5.8W/FT
Luminous Flux	580LM/FT(2700K), 610LM/FT(3000K), 640LM/FT(4000K)
Efficacy	100LM/W (2700K), 105LM/W (3000K), 110LM/W(4000K)
LEDs	SMD2835
CRI	90+
Max Run	16 FT
Life Span (hours)	30,000
Beam Angle	30°
Approvals	cULus for wet locations

## Ordering Codes:

ES-LS2835-27K-42-24-30

ES-LS2835-30K-42-24-30

ES-LS2835-40K-42-24-30

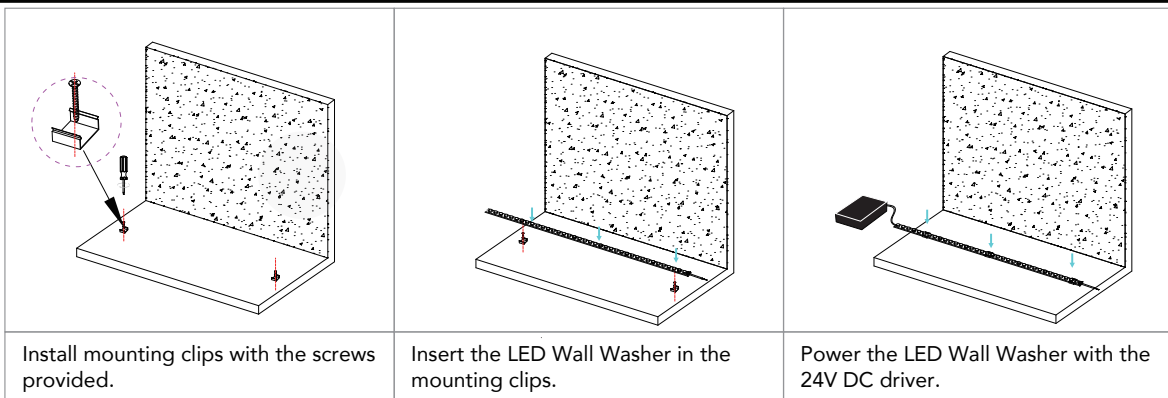
## NOTE:

The product is sold in 33FT rolls, but the maximum single run is 16FT. Custom lengths available.

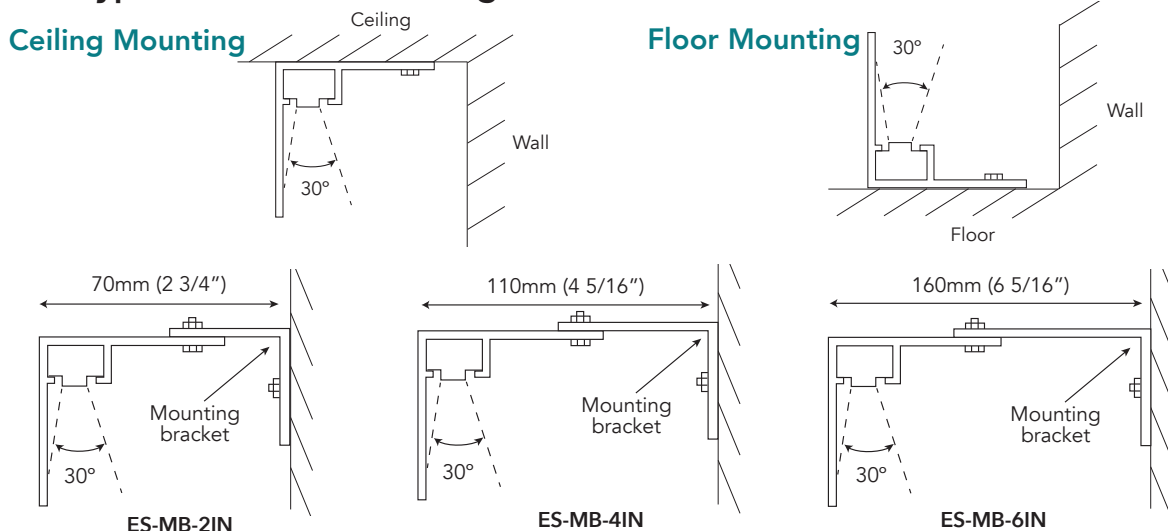
Project		Type	
Date		Contact	
Notes			

# LED Wall Washer

## Mounting Clips Installation



## Installation with "L" type extrusion to reduce glare



## Accessories & Extrusions:



## Indoor/Outdoor Dimmable Drivers

### MLDRE-40-24-DM

6.77" X 2.67" X 1.26" (171 X 68 X 32mm)

### MLDRE-96-24-DM

6.77" X 2.67" X 1.26" (171 X 68 X 32mm)

## Non-Dimmable Drivers

### MLDR-120-24

Indoor/Outdoor driver 120W hardwire  
Input: 100 - 240V AC; Output: 24V DC  
10" x 3 3/8" x 3 3/16" (254 x 85.7 x 80.9mm)