

## Key Features

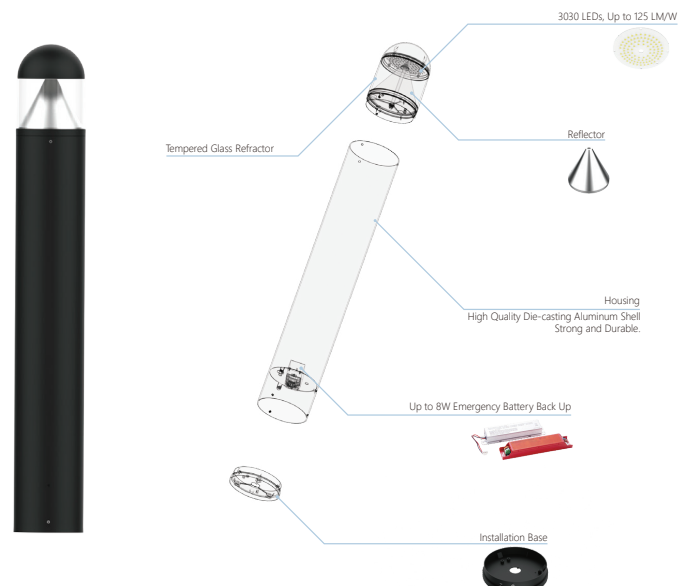
- ETL, DLC5.1 Premium listed
- 120-347V AC optional
- High efficacy up to 125 LM/W
- CCT and wattage tunable available
- Microwave motion, photocell sensor / Emergency battery backup optional
- Lifespan: >50,000Hrs
- 5 years warranty



## Specifications:

Input voltage	120-347V AC
Power factor	0.9
Power efficiency	>92%
Total harmonic distortion	<15%
Dimming	0-10V
Driver	Kerham
Surge Protection	L-N: 4KV;L/N-PG: 6KV
LED	3030
CCT	3000/4000/5000K (TUNABLE)
CRI	>70
Beam Angle	110°×105°
IP Rating	IP65
Life Time	>50,000Hrs (Ta=30°C@L80)
Warranty	5 Years
IK Degree	08

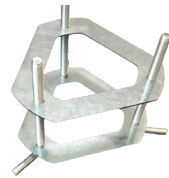
Watt	25/20/15/8W (ADJUSTABLE)
Efficacy	125 LPW
Lumens	3,125/2,500/1,875/1,000LM
Replace HID	50-70W
Housing	Die-cast Aluminum
Operating Temperature	-40°F to 104°F (-40°C to +40°C)
Certificates	ETL/DLC 5.1 Premium
Finish	Black



**Accessories:**

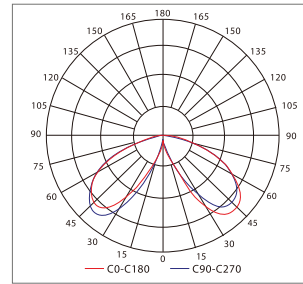


Surge Protector  
(WF-CB-SP)

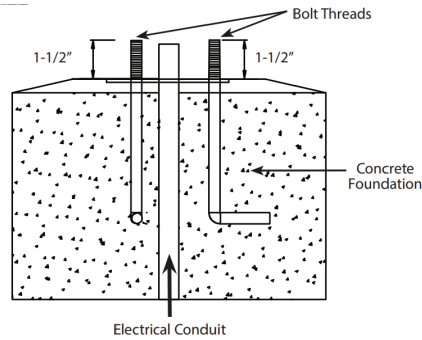


Anchor Bolt Carrier  
(WF-CB-MT)

**Photometric Diagram:**



Carrier with  
Fixture Base Installed



	Anchor Bolt Carrier x1
	M10*8 Nut x12
	M10 Spring Washer x3
	M10 Flat Washer x6
	Anchor Bolt x3
	Hex Wrench x1

Round Bollard  
Hardware

BOLLARD BASE

**Dimensions Inch (mm):**



Project:	Type:	Date:
Contact:	Notes:	