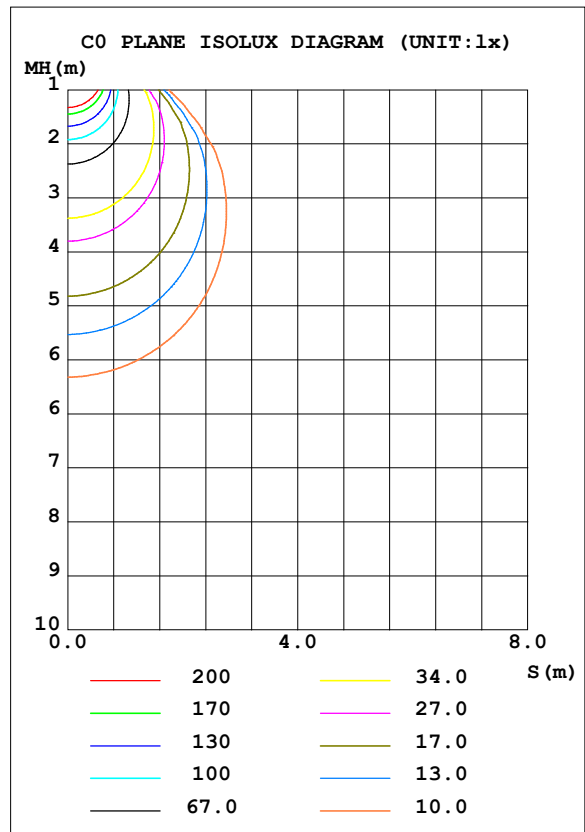
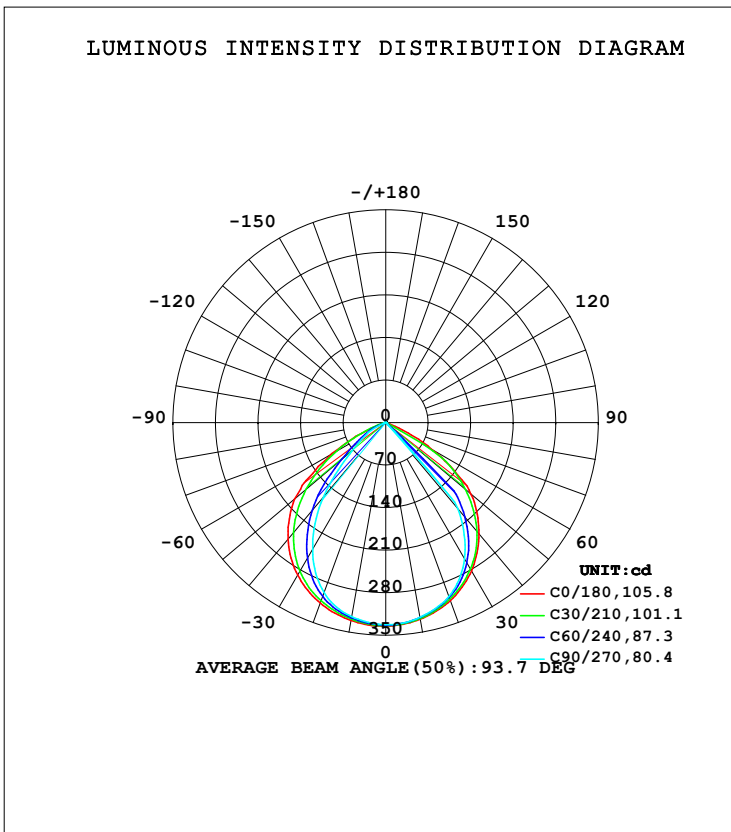




NATIONAL SPECIALTY LIGHTING LUMINAIRE PHOTOMETRIC TEST REPORT

Test:U:12.000V I:0.5830A P:6.9900W PF:1.0000 Freq:0Hz Lamp Flux:632.628x1 lm		
NAME:	FL-01-12V-YYY	TYPE:
SPEC.:		SERIAL No.:
MFR.:		Shielding Angle:
WEIGHT:		

DATA OF LAMP		PHOTOMETRIC DATA Eff: 90.50 lm/W			
MODEL		I _{max} (cd)	335.1	S/MH (C0/180)	1.28
NOMINAL POWER (W)		LOR (%)	100.0	S/MH (C90/270)	1.11
RATED VOLTAGE (V)	12	TOTAL FLUX (lm)	632.63	η UP, DN (C0-180)	0.0, 48.2
NOMINAL FLUX (lm)	632.628	CIE CLASS	DIRECT	η UP, DN (C180-360)	0.0, 51.7
LAMPS INSIDE	1	η up (%)	0.0	CIBSE SHR NOM	1.25
TEST VOLTAGE (V)	12	η down (%)	100.0	CIBSE SHR MAX	1.30



C Range: 0 - 360DEG
 C Interval: 15.0DEG
 Test Speed: HIGH
 Temperature: 25.3DEG
 Operators: SENPU
 Test Date: 2021-06-03

γ Range: 0 - 100DEG
 γ Interval: 1.0DEG
 Test System: EVERFINE GO-2000 SYSTEM V2.0.402
 Humidity: 65.0%
 Test Distance: 8.000m [K=1.0000]
 Remarks:

ZONAL FLUX DIAGRAM

ZONAL FLUX DIAGRAM:

γ	C0	C45	C90	C135	C180	C225	C270	C315	γ	Φ zone	Φ total	%lum,lamp
10	328.7	326.5	325.1	326.2	330.6	326.7	324.1	322.9	0- 10	31.43	31.43	4.97,4.97
20	311.4	307.7	304.5	309.5	315.6	308.1	297.2	302.2	10- 20	89.70	121.1	19.1,19.1
30	282.2	274.6	259.5	279.7	289.9	270.7	240.9	261.1	20- 30	133.5	254.6	40.3,40.3
40	239.0	221.4	184.5	228.7	250.2	211.6	159.4	196.1	30- 40	151.3	405.9	64.2,64.2
50	182.6	144.7	3.862	154.9	196.0	132.3	73.27	114.6	40- 50	123.8	529.7	83.7,83.7
60	85.38	2.090	0.2785	2.668	102.9	55.29	33.67	42.25	50- 60	72.72	602.5	95.2,95.2
70	4.675	0.1276	0.1054	0.1724	12.98	16.30	3.053	10.26	60- 70	26.59	629.1	99.4,99.4
80	0.3610	0.1202	0.0976	0.1652	0.3298	1.331	1.606	1.158	70- 80	2.821	631.9	99.9,99.9
90	0.1429	0.1277	0.1502	0.1127	0.0451	0.5109	0.8334	0.4585	80- 90	0.4848	632.4	100,100
100	0.2028	0.1427	0.2103	0.2103	0.0601	0.1201	0.3528	0.1051	90-100	0.2625	632.6	100,100
110	0	0	0	0	0	0	0	0	100-110	0.0092	632.6	100,100
120	0	0	0	0	0	0	0	0	110-120	0	632.6	100,100
130	0	0	0	0	0	0	0	0	120-130	0	632.6	100,100
140	0	0	0	0	0	0	0	0	130-140	0	632.6	100,100
150	0	0	0	0	0	0	0	0	140-150	0	632.6	100,100
160	0	0	0	0	0	0	0	0	150-160	0	632.6	100,100
170	0	0	0	0	0	0	0	0	160-170	0	632.6	100,100
180	0	0	0	0	0	0	0	0	170-180	0	632.6	100,100
DEG	LUMINOUS INTENSITY:cd									UNIT:lm		

Conical surface Flux(90deg): 475.06 lm

%lum = 75.1%

%lamp = 75.1%

Conical surface Flux(120deg): 602.46 lm

%lum = 95.2%

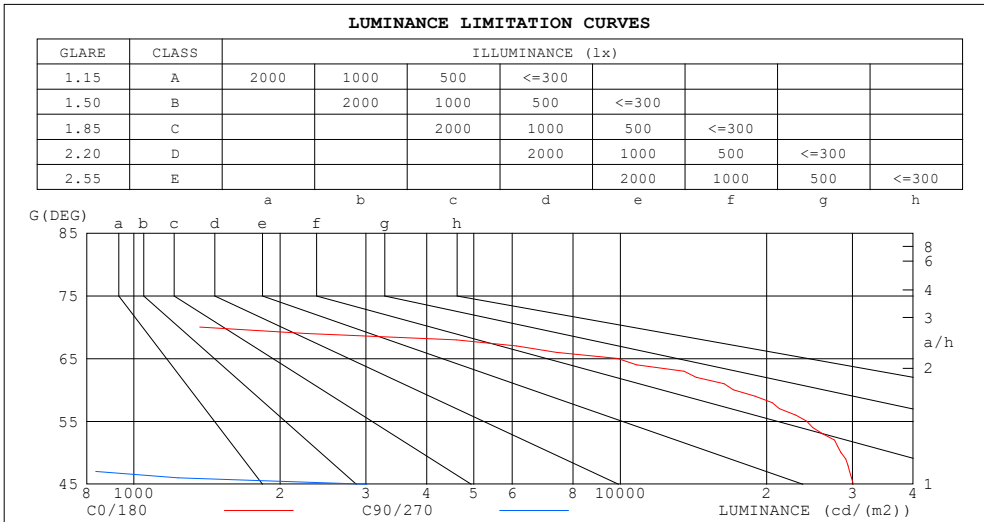
%lamp = 95.2%

C Range: 0 - 360DEG
 C Interval: 15.0DEG
 Test Speed: HIGH
 Temperature:25.3DEG
 Operators:SENPU
 Test Date:2021-06-03

γ Range: 0 - 100DEG
 γ Interval: 1.0DEG
 Test System:EVERFINE GO-2000 SYSTEM V2.0.402
 Humidity:65.0%
 Test Distance:8.000m [K=1.0000]
 Remarks:

LUMINANCE LIMITATION CURVES

Test:U:12.000V I:0.5830A P:6.9900W PF:1.0000 Freq:0Hz Lamp Flux:632.628x1 lm		
NAME:FL-01-12V-YYY	TYPE:	WEIGHT:
SPEC.:	DIM.:	SERIAL No.:
MFR.:	SUR.:	Shielding Angle:



LUMINANCE cd/(m2)		
G (DEG)	C0/180	C90/270
85	285	112
80	208	56
75	253	41
70	1367	31
65	9869	53
60	17077	56
55	24174	136
50	28406	601
45	30162	3016

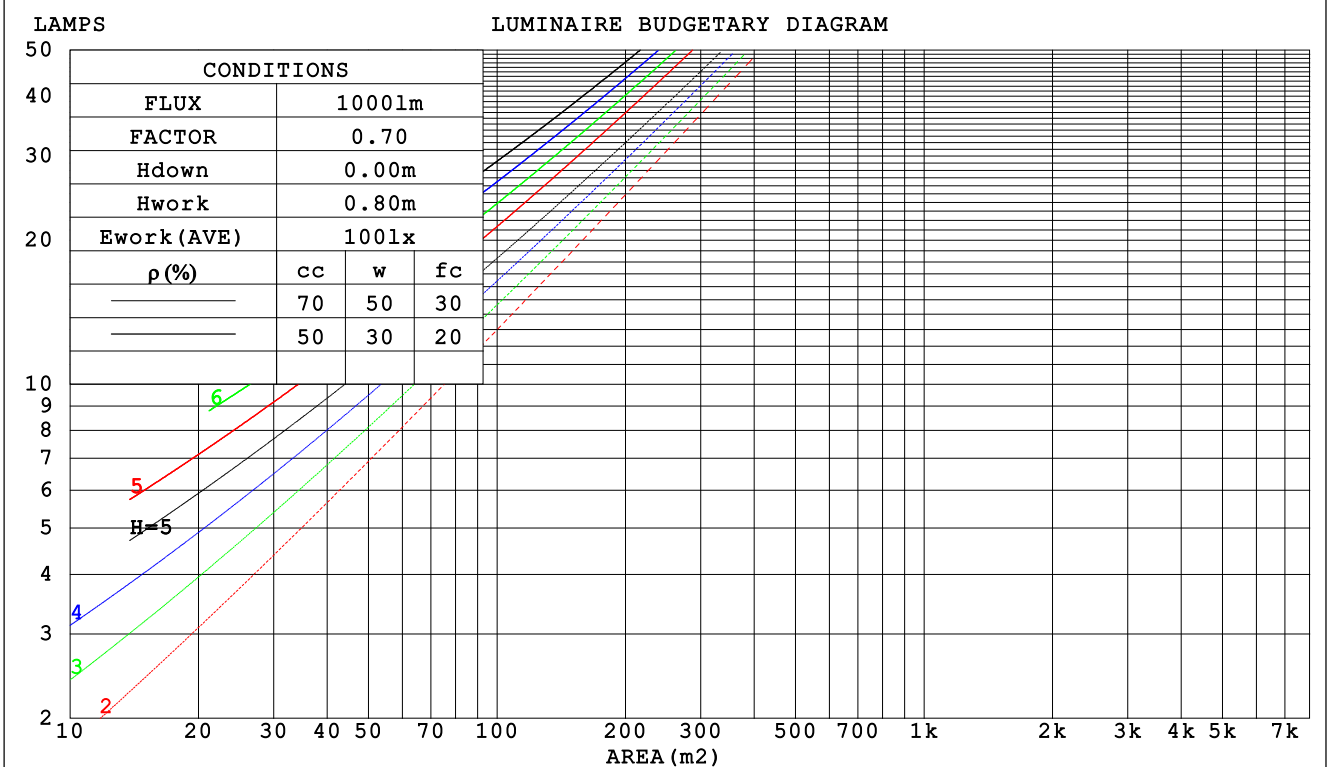
C Range: 0 - 360DEG
 C Interval: 15.0DEG
 Test Speed: HIGH
 Temperature:25.3DEG
 Operators:SENPU
 Test Date:2021-06-03

γ Range: 0 - 100DEG
 γ Interval: 1.0DEG
 Test System:EVERFINE GO-2000 SYSTEM V2.0.402
 Humidity:65.0%
 Test Distance:8.000m [K=1.0000]
 Remarks:

CU AND LUMINAIRE BUDGETARY ESTIMATE DIAGRAM

Test:U:12.000V I:0.5830A P:6.9900W PF:1.0000 Freq:0Hz Lamp Flux:632.628x1 lm		
NAME: FL-01-12V-YYY	TYPE:	WEIGHT:
SPEC.:	DIM.:	SERIAL No.:
MFR.:	SUR.:	Shielding Angle:

ρcc	80%			70%			50%			30%			10%			0
ρw	50%	30%	10%	50%	30%	10%	50%	30%	10%	50%	30%	10%	50%	30%	10%	0
ρfc	20%			20%			20%			20%			20%			0
RCR	RCR:Room Cavity Ratio															
	Coefficients of Utilization(CU)															
0.0	1.19	1.19	1.19	1.16	1.16	1.16	1.11	1.11	1.11	1.06	1.06	1.06	1.02	1.02	1.02	.00
1.0	1.08	1.05	1.02	1.06	1.03	1.01	1.02	.90	.97	.98	.96	.94	.95	.93	.92	.90
2.0	.98	.92	.88	.96	.91	.87	.92	.88	.85	.89	.86	.83	.86	.84	.81	.79
3.0	.88	.82	.76	.87	.81	.76	.84	.79	.74	.81	.77	.73	.79	.75	.72	.70
4.0	.80	.72	.67	.78	.72	.67	.76	.70	.66	.74	.69	.65	.72	.68	.64	.62
5.0	.72	.65	.59	.71	.64	.59	.69	.63	.58	.68	.62	.58	.66	.61	.57	.55
6.0	.66	.58	.53	.65	.58	.53	.63	.57	.52	.62	.56	.52	.60	.55	.51	.50
7.0	.61	.53	.47	.60	.53	.47	.58	.52	.47	.57	.51	.47	.56	.50	.46	.45
8.0	.56	.48	.43	.55	.48	.43	.54	.47	.43	.53	.47	.42	.52	.46	.42	.40
9.0	.51	.44	.39	.51	.44	.39	.50	.43	.39	.49	.43	.39	.48	.42	.38	.37
10.0	.48	.41	.36	.47	.40	.36	.46	.40	.36	.45	.40	.35	.45	.39	.35	.34



C Range: 0 - 360DEG
 C Interval: 15.0DEG
 Test Speed: HIGH
 Temperature:25.3DEG
 Operators:SENPU
 Test Date:2021-06-03

γ Range: 0 - 100DEG
 γ Interval: 1.0DEG
 Test System:EVERFINE GO-2000 SYSTEM V2.0.402
 Humidity:65.0%
 Test Distance:8.000m [K=1.0000]
 Remarks:

WEC AND CCEC

Test:U:12.000V I:0.5830A P:6.9900W PF:1.0000 Freq:0Hz Lamp Flux:632.628x1 lm		
NAME: FL-01-12V-YYY	TYPE:	WEIGHT:
SPEC.:	DIM.:	SERIAL No.:
MFR.:	SUR.:	Shielding Angle:

ρcc	80%			70%			50%			30%			10%			0
ρw	50%	30%	10%	50%	30%	10%	50%	30%	10%	50%	30%	10%	50%	30%	10%	0
ρfc	20%			20%			20%			20%			20%			0
RCR	RCR:Room Cavity Ratio						Wall Exitance Coefficients (WEC)									
0.0																
1.0	.227	.129	.041	.220	.126	.040	.207	.119	.038	.195	.113	.036	.185	.107	.034	
2.0	.223	.122	.038	.217	.120	.037	.206	.115	.036	.196	.110	.034	.186	.105	.033	
3.0	.214	.114	.034	.209	.112	.034	.199	.108	.033	.190	.104	.032	.182	.101	.031	
4.0	.204	.106	.031	.199	.104	.031	.191	.101	.030	.183	.098	.030	.175	.095	.029	
5.0	.193	.098	.028	.189	.097	.028	.181	.094	.028	.174	.092	.027	.168	.090	.027	
6.0	.183	.092	.026	.179	.090	.026	.172	.088	.026	.166	.086	.025	.160	.084	.025	
7.0	.173	.086	.024	.170	.085	.024	.164	.083	.024	.158	.081	.024	.153	.079	.023	
8.0	.164	.080	.023	.161	.079	.022	.156	.078	.022	.151	.076	.022	.146	.075	.022	
9.0	.155	.075	.021	.153	.075	.021	.148	.073	.021	.143	.072	.021	.139	.071	.020	
10.0	.148	.071	.020	.145	.070	.020	.141	.069	.019	.137	.068	.019	.133	.067	.019	

ρcc	80%			70%			50%			30%			10%			0
ρw	50%	30%	10%	50%	30%	10%	50%	30%	10%	50%	30%	10%	50%	30%	10%	0
ρfc	20%			20%			20%			20%			20%			0
RCR	RCR:Room Cavity Ratio						Ceiling Cavity Exitance Coefficients (CCEC)									
0.0	.191	.191	.191	.163	.163	.163	.111	.111	.111	.064	.064	.064	.020	.020	.020	
1.0	.175	.157	.141	.150	.135	.122	.102	.093	.084	.059	.054	.049	.019	.017	.016	
2.0	.163	.133	.107	.140	.114	.092	.096	.079	.064	.055	.046	.038	.018	.015	.012	
3.0	.154	.114	.083	.132	.099	.072	.091	.068	.050	.052	.040	.030	.017	.013	.010	
4.0	.146	.100	.065	.125	.087	.057	.086	.060	.040	.050	.035	.024	.016	.012	.008	
5.0	.139	.089	.053	.119	.077	.046	.082	.054	.033	.048	.032	.019	.015	.010	.006	
6.0	.132	.081	.044	.114	.070	.038	.078	.049	.027	.045	.029	.016	.015	.009	.005	
7.0	.126	.074	.037	.108	.064	.032	.075	.045	.023	.044	.026	.014	.014	.009	.005	
8.0	.120	.068	.032	.104	.059	.028	.072	.041	.020	.042	.024	.012	.013	.008	.004	
9.0	.115	.063	.028	.099	.055	.024	.069	.038	.017	.040	.023	.010	.013	.007	.003	
10.0	.110	.059	.024	.095	.051	.021	.066	.036	.015	.038	.021	.009	.012	.007	.003	

C Range: 0 - 360DEG
 C Interval: 15.0DEG
 Test Speed: HIGH
 Temperature:25.3DEG
 Operators:SENPU
 Test Date:2021-06-03

γ Range: 0 - 100DEG
 γ Interval: 1.0DEG
 Test System:EVERFINE GO-2000 SYSTEM V2.0.402
 Humidity:65.0%
 Test Distance:8.000m [K=1.0000]
 Remarks:

UGR(Unified Glare Rating) Table

Test:U:12.000V I:0.5830A P:6.9900W PF:1.0000 Freq:0Hz Lamp Flux:632.628x1 lm										
NAME:FL-01-12V-YYY					TYPE:			WEIGHT:		
SPEC.:					DIM.:			SERIAL No.:		
MFR.:					SUR.:			Shielding Angle:		
ceiling/cavity	0.7	0.7	0.5	0.5	0.3	0.7	0.7	0.5	0.5	0.3
walls	0.5	0.3	0.5	0.3	0.3	0.5	0.3	0.5	0.3	0.3
working plane	0.2	0.2	0.2	0.2	0.2	0.2	0.2	0.2	0.2	0.2
Room dimensions	Viewed crosswise					Viewed endwise				
x = 2H y = 2H	24.1	25.4	24.3	25.5	25.7	17.7	19.0	18.0	19.2	19.4
3H	24.0	25.2	24.3	25.4	25.6	17.5	18.7	17.8	18.9	19.1
4H	23.9	25.0	24.2	25.3	25.5	17.4	18.5	17.7	18.8	19.0
6H	23.8	24.9	24.2	25.1	25.4	17.3	18.4	17.7	18.6	18.9
8H	23.8	24.8	24.1	25.1	25.3	17.3	18.3	17.6	18.5	18.8
12H	23.8	24.7	24.1	25.0	25.3	17.2	18.2	17.6	18.5	18.8
4H 2H	23.8	24.9	24.1	25.1	25.4	18.0	19.1	18.3	19.3	19.5
3H	23.8	24.7	24.1	25.0	25.3	17.8	18.7	18.1	19.0	19.3
4H	23.7	24.5	24.0	24.8	25.1	17.7	18.5	18.0	18.8	19.2
6H	23.6	24.3	24.0	24.7	25.0	17.6	18.3	18.0	18.7	19.0
8H	23.5	24.2	23.9	24.6	24.9	17.5	18.2	17.9	18.6	19.0
12H	23.5	24.1	23.9	24.5	24.9	17.5	18.1	17.9	18.5	18.9
8H 4H	23.5	24.2	23.9	24.6	24.9	17.5	18.2	17.9	18.6	19.0
6H	23.4	24.0	23.9	24.4	24.8	17.5	18.0	17.9	18.4	18.8
8H	23.4	23.9	23.8	24.3	24.7	17.4	17.9	17.9	18.3	18.8
12H	23.3	23.8	23.8	24.2	24.7	17.4	17.8	17.8	18.2	18.7
12H 4H	23.5	24.1	23.9	24.5	24.9	17.5	18.1	17.9	18.5	18.9
6H	23.4	23.9	23.8	24.3	24.7	17.4	17.9	17.9	18.3	18.8
8H	23.3	23.8	23.8	24.2	24.7	17.4	17.8	17.8	18.2	18.7
Variations with the observer position at spacings:										
S = 1.0H	+ 1.1 / - 2.6					+ 2.8 / -29.4				
1.5H	+ 1.1 / - 1.2					+ 3.8 / -21.6				
2.0H	+ 2.2 / -19.4					+ 8.0 / -19.9				

CIE Pub.117, 632.6 lm Total Lamp Luminous Flux Corrected (8log(F/F0) = -1.6)

C Range: 0 - 360DEG
 C Interval: 15.0DEG
 Test Speed: HIGH
 Temperature:25.3DEG
 Operators:SENPU
 Test Date:2021-06-03

γ Range: 0 - 100DEG
 γ Interval: 1.0DEG
 Test System:EVERFINE GO-2000 SYSTEM V2.0.402
 Humidity:65.0%
 Test Distance:8.000m [K=1.0000]
 Remarks:

UTILIZATION FACTORS TABLE

Test:U:12.000V I:0.5830A P:6.9900W PF:1.0000 Freq:0Hz Lamp Flux:632.628x1 lm		
NAME: FL-01-12V-YYY	TYPE:	WEIGHT:
SPEC.:	DIM.:	SERIAL No.:
MFR.:	SUR.:	Shielding Angle:

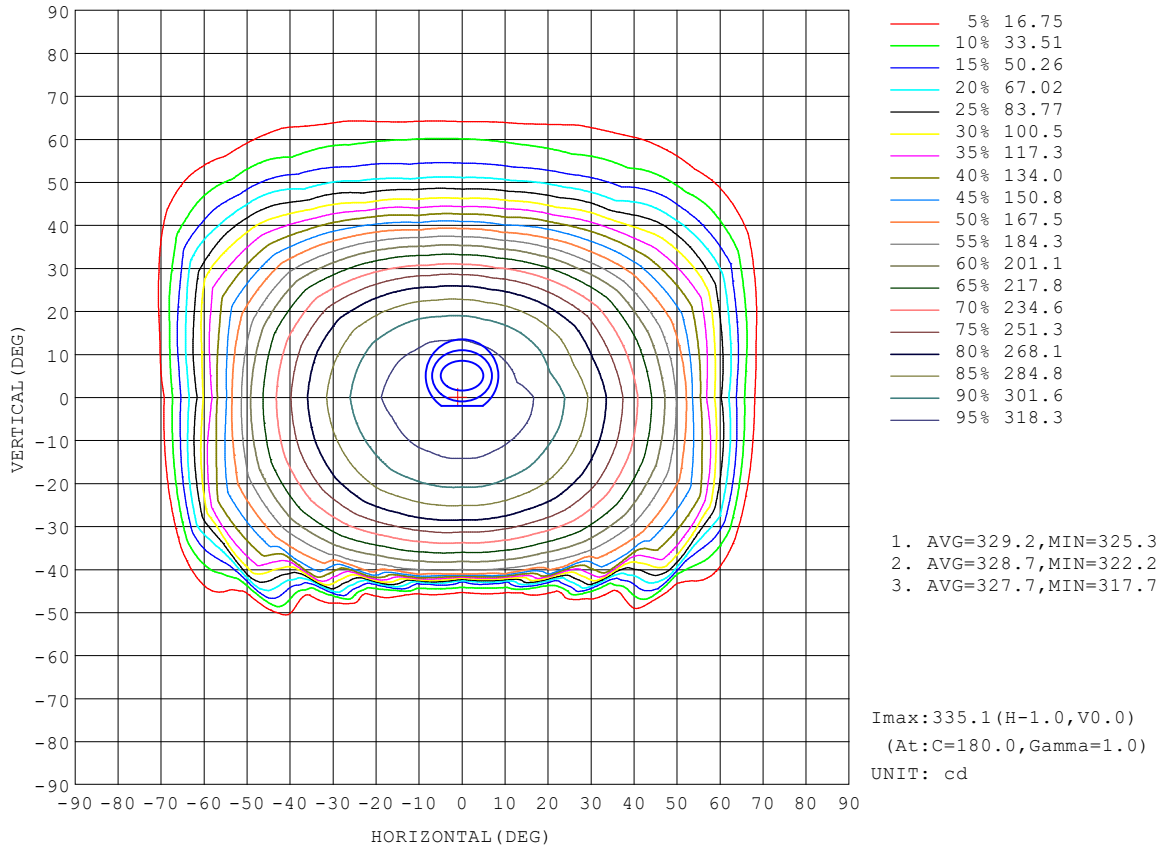
REFLECTANCE										
Ceiling	0.8	0.8	0.8	0.7	0.7	0.7	0.5	0.5	0.5	0
Walls	0.7	0.5	0.3	0.7	0.5	0.3	0.7	0.5	0.3	0
Working plane	0.2	0.2	0.2	0.2	0.2	0.2	0.2	0.2	0.2	0
ROOM INDEX	UTILIZATION FACTORS (PERCENT) $k(RI) \times RCR = 5$									
k = 0.60	68	59	53	68	59	53	67	58	53	47
0.80	79	69	63	78	69	63	76	68	63	57
1.00	87	78	73	86	78	72	84	78	72	66
1.25	93	85	80	92	85	79	89	83	79	73
1.50	97	90	85	96	89	84	93	88	83	77
2.00	102	96	92	101	95	91	98	93	89	83
2.50	105	100	95	103	98	94	100	96	92	85
3.00	108	103	99	106	101	98	102	98	96	88
4.00	110	106	103	108	105	102	104	101	99	91
5.00	112	109	106	110	107	104	106	103	101	93
ROOM INDEX	UF(total)									Direct
According to DIN EN 13032-2 2004			Suspended				SHRNOM = 1.25			

C Range: 0 - 360DEG
 C Interval: 15.0DEG
 Test Speed: HIGH
 Temperature:25.3DEG
 Operators:SENPU
 Test Date:2021-06-03

γ Range: 0 - 100DEG
 γ Interval: 1.0DEG
 Test System:EVERFINE GO-2000 SYSTEM V2.0.402
 Humidity:65.0%
 Test Distance:8.000m [K=1.0000]
 Remarks:

ISOCANDELA DIAGRAM

Test:U:12.000V I:0.5830A P:6.9900W PF:1.0000 Freq:0Hz Lamp Flux:632.628x1 lm		
NAME: FL-01-12V-YYY	TYPE:	WEIGHT:
SPEC.:	DIM.:	SERIAL No.:
MFR.:	SUR.:	Shielding Angle:

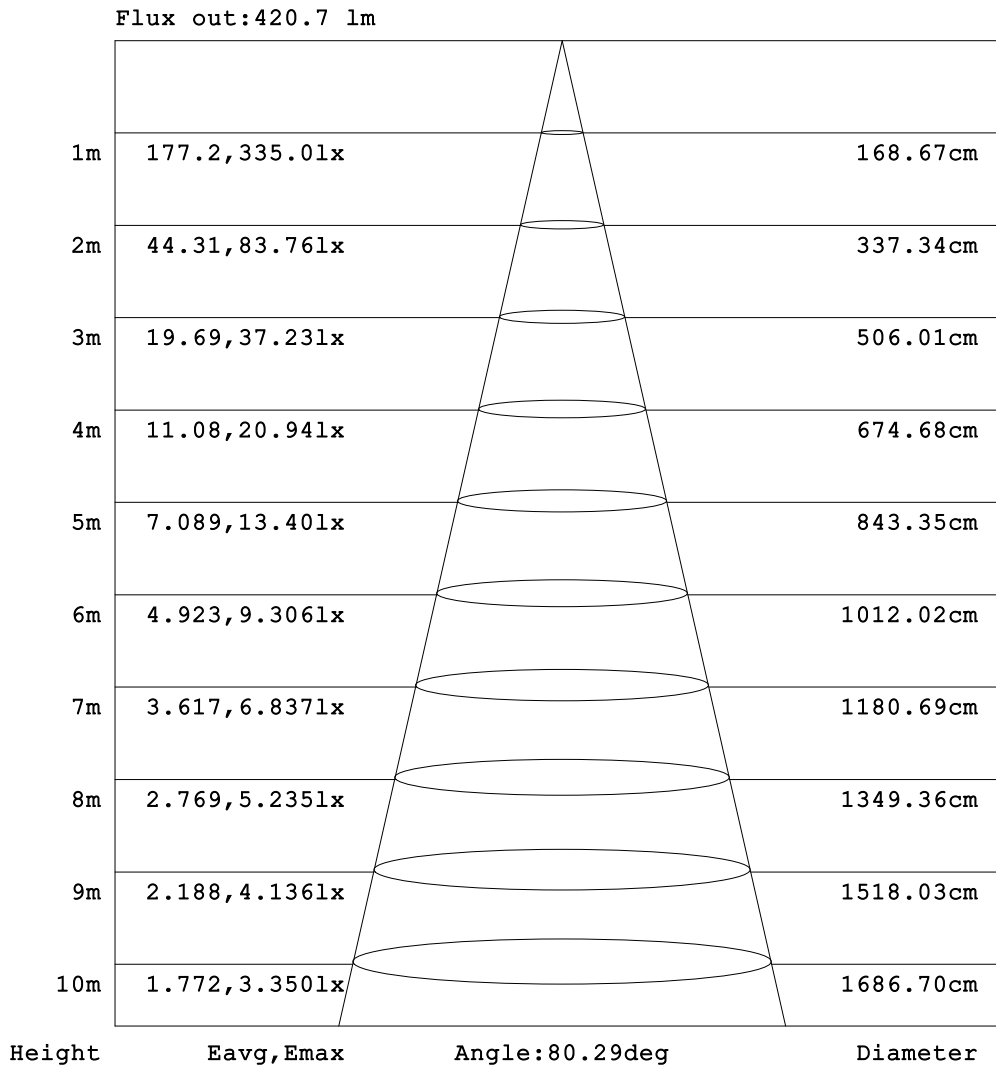


C Range: 0 - 360DEG
 C Interval: 15.0DEG
 Test Speed: HIGH
 Temperature:25.3DEG
 Operators:SENPU
 Test Date:2021-06-03

γ Range: 0 - 100DEG
 γ Interval: 1.0DEG
 Test System:EVERFINE GO-2000 SYSTEM V2.0.402
 Humidity:65.0%
 Test Distance:8.000m [K=1.0000]
 Remarks:

AAI Figure

Test:U:12.000V I:0.5830A P:6.9900W PF:1.0000 Freq:0Hz Lamp Flux:632.628x1 lm		
NAME: FL-01-12V-YYY	TYPE:	WEIGHT:
SPEC.:	DIM.:	SERIAL No.:
MFR.:	SUR.:	Shielding Angle:



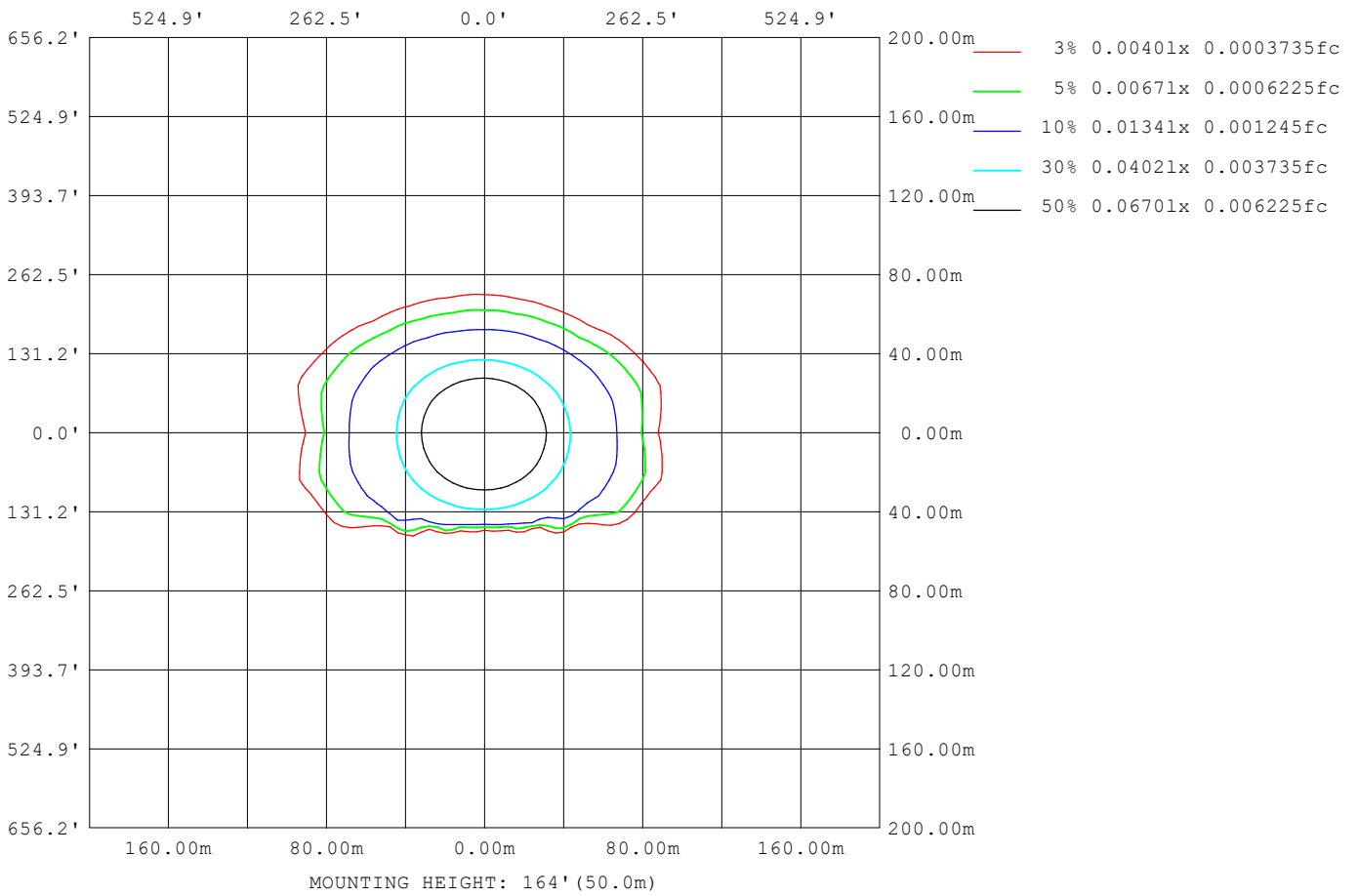
Note: The Curves indicate the illuminated area and the average illumination when the luminaire is at different distance.

C Range: 0 - 360DEG
 C Interval: 15.0DEG
 Test Speed: HIGH
 Temperature: 25.3DEG
 Operators: SENPU
 Test Date: 2021-06-03

γ Range: 0 - 100DEG
 γ Interval: 1.0DEG
 Test System: EVERFINE GO-2000 SYSTEM V2.0.402
 Humidity: 65.0%
 Test Distance: 8.000m [K=1.0000]
 Remarks:

ISOLUX DIAGRAM

Test:U:12.000V I:0.5830A P:6.9900W PF:1.0000 Freq:0Hz Lamp Flux:632.628x1 lm		
NAME: FL-01-12V-YYY	TYPE:	WEIGHT:
SPEC.:	DIM.:	SERIAL No.:
MFR.:	SUR.:	Shielding Angle:



C Range: 0 - 360DEG
 C Interval: 15.0DEG
 Test Speed: HIGH
 Temperature:25.3DEG
 Operators:SENPU
 Test Date:2021-06-03

γ Range: 0 - 100DEG
 γ Interval: 1.0DEG
 Test System:EVERFINE GO-2000 SYSTEM V2.0.402
 Humidity:65.0%
 Test Distance:8.000m [K=1.0000]
 Remarks:

LED Avg.L Report

Test:U:12.000V I:0.5830A P:6.9900W PF:1.0000 Freq:0Hz Lamp Flux:632.628x1 lm		
NAME: FL-01-12V-YYY	TYPE:	WEIGHT:
SPEC.:	DIM.:	SERIAL No.:
MFR.:	SUR.:	Shielding Angle:

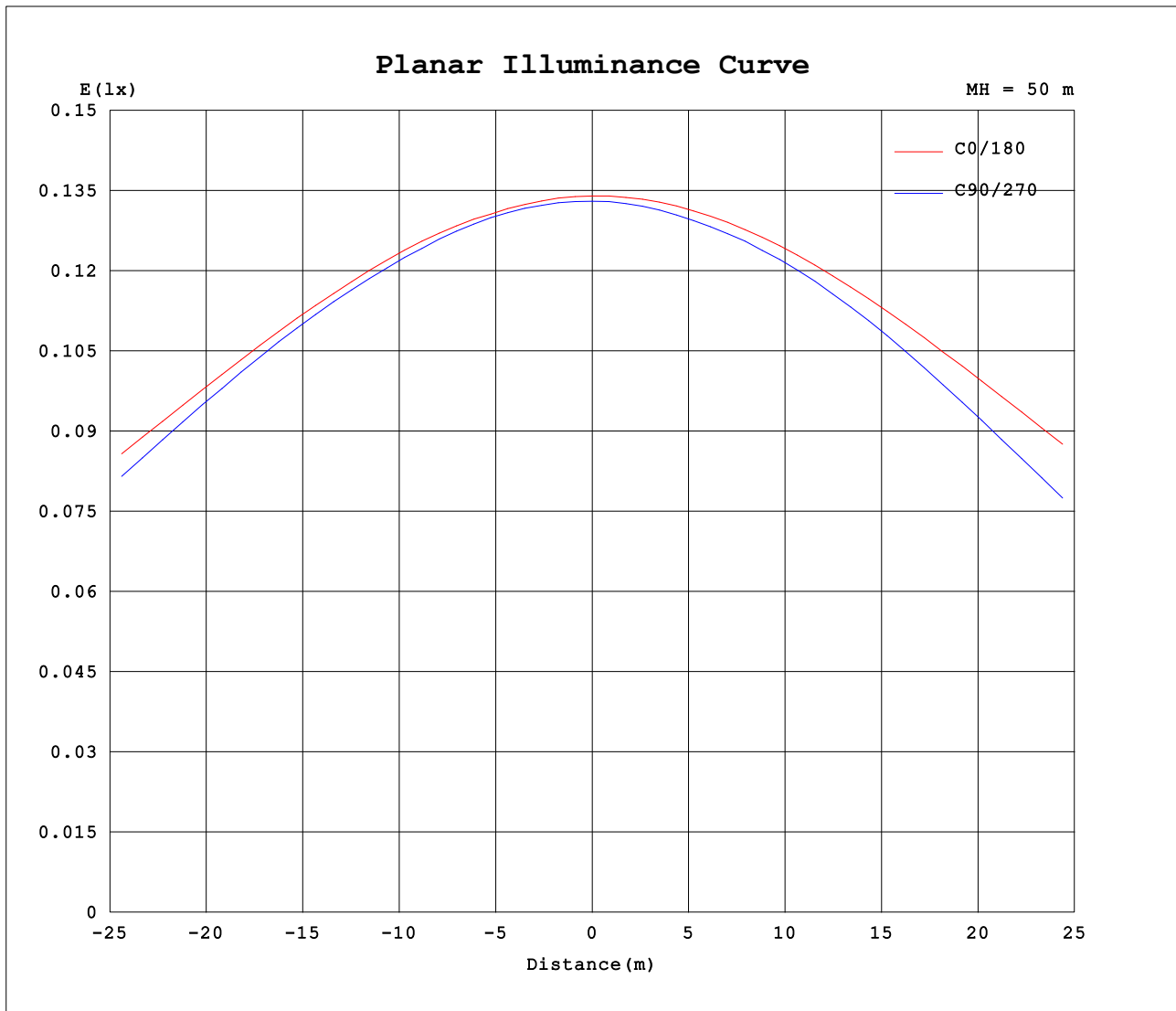
AvgL	cd/m2
L_0~180 (65) av	11411
L_0~180 (75) av	297
L_0~180 (85) av	233
L_90~270 (65) av	1292
L_90~270 (75) av	408
L_90~270 (85) av	715
L_45 (65) av	3340
L_45 (75) av	429
L_45 (85) av	500

Standard: GB/T 29293-2012

C Range: 0 - 360DEG
 C Interval: 15.0DEG
 Test Speed: HIGH
 Temperature:25.3DEG
 Operators:SENPU
 Test Date:2021-06-03

γ Range: 0 - 100DEG
 γ Interval: 1.0DEG
 Test System:EVERFINE GO-2000 SYSTEM V2.0.402
 Humidity:65.0%
 Test Distance:8.000m [K=1.0000]
 Remarks:

Planar Illuminance Curve



C Range: 0 - 360DEG
 C Interval: 15.0DEG
 Test Speed: HIGH
 Temperature: 25.3DEG
 Operators: SENPU
 Test Date: 2021-06-03

γ Range: 0 - 100DEG
 γ Interval: 1.0DEG
 Test System: EVERFINE GO-2000 SYSTEM V2.0.402
 Humidity: 65.0%
 Test Distance: 8.000m [K=1.0000]
 Remarks:

LUMINOUS DISTRIBUTION INTENSITY DATA

Test:U:12.000V I:0.5830A P:6.9900W PF:1.0000 Freq:0Hz Lamp Flux:632.628x1 lm		
NAME: FL-01-12V-YYY	TYPE:	WEIGHT:
SPEC.:	DIM.:	SERIAL No.:
MFR.:	SUR.:	Shielding Angle:

Table--1

UNIT: cd

C (DEG) \ γ (DEG)	0	15	30	45	60	75	90	105	120	135	150	165	180	195	210	225	240	255	270
0	335	335	334	334	333	333	332	332	332	332	331	331	335	335	334	334	333	333	332
5	333	332	332	332	331	331	331	331	330	331	330	330	334	333	333	332	331	330	330
10	329	328	327	326	325	326	325	325	325	326	326	327	331	329	328	327	326	325	324
15	321	321	320	318	317	317	317	317	318	319	320	321	324	323	321	319	318	315	314
20	311	311	309	308	306	306	304	305	307	309	311	313	316	314	312	308	304	299	297
25	298	297	295	294	290	287	285	288	292	297	299	302	304	302	299	292	284	276	273
30	282	281	279	275	267	262	259	264	270	280	284	287	290	287	282	271	258	245	241
35	262	261	258	251	238	230	226	232	242	257	266	270	272	269	261	244	225	209	203
40	239	238	233	221	202	191	185	193	208	229	243	249	250	247	236	212	188	167	159
45	213	214	205	186	159	35.9	21.3	37.7	166	194	215	225	225	221	206	175	144	117	111
50	183	186	171	145	7.12	3.77	3.86	3.97	11.5	155	183	197	196	191	171	132	95.0	78.3	73.3
55	139	157	135	11.1	2.27	1.08	0.78	1.26	2.67	25.0	145	166	147	159	133	88.2	62.9	50.7	47.7
60	85.4	113	71.5	2.09	0.46	0.23	0.28	0.27	0.53	2.67	101	134	103	127	92.7	55.3	39.6	35.1	33.7
65	41.7	49.5	2.22	0.29	0.27	0.19	0.23	0.22	0.27	0.40	4.62	74.9	54.7	85.3	50.9	31.2	26.6	15.3	10.7
70	4.68	2.61	0.34	0.13	0.17	0.10	0.11	0.09	0.20	0.17	0.79	16.5	13.0	46.3	21.9	16.3	3.89	3.23	3.05
75	0.66	0.32	0.20	0.12	0.13	0.10	0.11	0.09	0.16	0.13	0.23	0.44	0.88	15.0	7.91	2.31	2.18	2.12	2.00
80	0.36	0.16	0.13	0.12	0.11	0.11	0.10	0.10	0.11	0.17	0.14	0.20	0.33	1.39	1.06	1.33	1.48	1.66	1.61
85	0.25	0.15	0.16	0.12	0.11	0.12	0.10	0.11	0.11	0.11	0.08	0.12	0.16	0.42	0.46	0.80	0.99	1.17	1.15
90	0.14	0.23	0.17	0.13	0.11	0.19	0.15	0.11	0.11	0.11	0.09	0.17	0.05	0.22	0.23	0.51	0.69	0.86	0.83
95	0.22	0.13	0.14	0.16	0.19	0.14	0.12	0.14	0.11	0.13	0.21	0.15	0.06	0.10	0.12	0.34	0.46	0.65	0.64
100	0.20	0.17	0.17	0.14	0.14	0.20	0.21	0.14	0.14	0.21	0.23	0.15	0.06	0.08	0.07	0.12	0.20	0.38	0.35
105	0.00	0.00	0.00	0.00	0.00	0.00	0.00	0.00	0.00	0.00	0.00	0.00	0.00	0.00	0.00	0.00	0.00	0.00	0.00
110	0.00	0.00	0.00	0.00	0.00	0.00	0.00	0.00	0.00	0.00	0.00	0.00	0.00	0.00	0.00	0.00	0.00	0.00	0.00
115	0.00	0.00	0.00	0.00	0.00	0.00	0.00	0.00	0.00	0.00	0.00	0.00	0.00	0.00	0.00	0.00	0.00	0.00	0.00
120	0.00	0.00	0.00	0.00	0.00	0.00	0.00	0.00	0.00	0.00	0.00	0.00	0.00	0.00	0.00	0.00	0.00	0.00	0.00
125	0.00	0.00	0.00	0.00	0.00	0.00	0.00	0.00	0.00	0.00	0.00	0.00	0.00	0.00	0.00	0.00	0.00	0.00	0.00
130	0.00	0.00	0.00	0.00	0.00	0.00	0.00	0.00	0.00	0.00	0.00	0.00	0.00	0.00	0.00	0.00	0.00	0.00	0.00
135	0.00	0.00	0.00	0.00	0.00	0.00	0.00	0.00	0.00	0.00	0.00	0.00	0.00	0.00	0.00	0.00	0.00	0.00	0.00
140	0.00	0.00	0.00	0.00	0.00	0.00	0.00	0.00	0.00	0.00	0.00	0.00	0.00	0.00	0.00	0.00	0.00	0.00	0.00
145	0.00	0.00	0.00	0.00	0.00	0.00	0.00	0.00	0.00	0.00	0.00	0.00	0.00	0.00	0.00	0.00	0.00	0.00	0.00
150	0.00	0.00	0.00	0.00	0.00	0.00	0.00	0.00	0.00	0.00	0.00	0.00	0.00	0.00	0.00	0.00	0.00	0.00	0.00
155	0.00	0.00	0.00	0.00	0.00	0.00	0.00	0.00	0.00	0.00	0.00	0.00	0.00	0.00	0.00	0.00	0.00	0.00	0.00
160	0.00	0.00	0.00	0.00	0.00	0.00	0.00	0.00	0.00	0.00	0.00	0.00	0.00	0.00	0.00	0.00	0.00	0.00	0.00
165	0.00	0.00	0.00	0.00	0.00	0.00	0.00	0.00	0.00	0.00	0.00	0.00	0.00	0.00	0.00	0.00	0.00	0.00	0.00
170	0.00	0.00	0.00	0.00	0.00	0.00	0.00	0.00	0.00	0.00	0.00	0.00	0.00	0.00	0.00	0.00	0.00	0.00	0.00
175	0.00	0.00	0.00	0.00	0.00	0.00	0.00	0.00	0.00	0.00	0.00	0.00	0.00	0.00	0.00	0.00	0.00	0.00	0.00
180	0.00	0.00	0.00	0.00	0.00	0.00	0.00	0.00	0.00	0.00	0.00	0.00	0.00	0.00	0.00	0.00	0.00	0.00	0.00

C Range: 0 - 360DEG
 C Interval: 15.0DEG
 Test Speed: HIGH
 Temperature:25.3DEG
 Operators:SENPU
 Test Date:2021-06-03

γ Range: 0 - 100DEG
 γ Interval: 1.0DEG
 Test System:EVERFINE GO-2000 SYSTEM V2.0.402
 Humidity:65.0%
 Test Distance:8.000m [K=1.0000]
 Remarks:

LUMINOUS DISTRIBUTION INTENSITY DATA

Test:U:12.000V I:0.5830A P:6.9900W PF:1.0000 Freq:0Hz Lamp Flux:632.628x1 lm		
NAME: FL-01-12V-YYY	TYPE:	WEIGHT:
SPEC.:	DIM.:	SERIAL No.:
MFR.:	SUR.:	Shielding Angle:

Table--2

UNIT: cd

C (DEG) γ (DEG)	285	300	315	330	345														
0	332	332	332	331	331														
5	329	329	329	329	329														
10	324	323	323	323	323														
15	313	314	315	315	315														
20	297	300	302	304	305														
25	273	278	285	290	291														
30	242	251	261	271	274														
35	204	216	231	248	254														
40	161	177	196	219	230														
45	115	132	158	185	203														
50	75.6	87.0	115	149	174														
55	47.6	54.4	69.7	112	143														
60	32.9	34.0	42.3	72.4	107														
65	13.1	22.2	24.6	36.1	61.9														
70	3.06	3.26	10.3	14.3	27.1														
75	2.04	1.94	1.89	3.56	4.47														
80	1.62	1.40	1.16	0.82	0.66														
85	1.14	0.92	0.71	0.36	0.34														
90	0.86	0.67	0.46	0.22	0.19														
95	0.63	0.43	0.29	0.10	0.09														
100	0.32	0.15	0.11	0.09	0.08														
105	0.00	0.00	0.00	0.00	0.00														
110	0.00	0.00	0.00	0.00	0.00														
115	0.00	0.00	0.00	0.00	0.00														
120	0.00	0.00	0.00	0.00	0.00														
125	0.00	0.00	0.00	0.00	0.00														
130	0.00	0.00	0.00	0.00	0.00														
135	0.00	0.00	0.00	0.00	0.00														
140	0.00	0.00	0.00	0.00	0.00														
145	0.00	0.00	0.00	0.00	0.00														
150	0.00	0.00	0.00	0.00	0.00														
155	0.00	0.00	0.00	0.00	0.00														
160	0.00	0.00	0.00	0.00	0.00														
165	0.00	0.00	0.00	0.00	0.00														
170	0.00	0.00	0.00	0.00	0.00														
175	0.00	0.00	0.00	0.00	0.00														
180	0.00	0.00	0.00	0.00	0.00														

C Range: 0 - 360DEG
 C Interval: 15.0DEG
 Test Speed: HIGH
 Temperature:25.3DEG
 Operators:SENPU
 Test Date:2021-06-03

γ Range: 0 - 100DEG
 γ Interval: 1.0DEG
 Test System:EVERFINE GO-2000 SYSTEM V2.0.402
 Humidity:65.0%
 Test Distance:8.000m [K=1.0000]
 Remarks: