

- For all exterior to a wall or burial applications, use only CSA approved or equivalent 18G wire labeled "Sprinkler Wire" or "Direct Burial", NSL part number LW-18G-BUR.

- First, disconnect power from LED Driver. Wire LED MiniDisc Lights per these instructions, assure proper tightness on all terminal blocks, strain reliefs, and MiniDisc Light covers, and then apply 120VAC power to LED Driver.
- Do not try to adjust, fix, rewire, LED module. In the unlikely event LED module does not illuminate, check wiring polarity and terminal block first. If this does not work, send LED module back for warranty replacement, if applicable.

NOTE: These products may represent a possible shock or fire hazard if improperly installed or attached in any way. Products should be installed in accordance with the owner's manual, current local codes, and/or the current National Electrical Code.

SPECIFICATIONS

Approvals: cETLus listed for wet and burial applications.

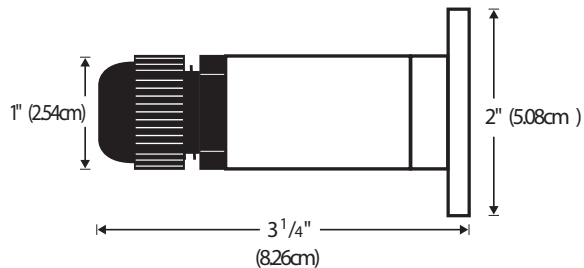
Electrical Rating Per MiniDisc Light: 0.24 watts, 20mA, 12VDC

Average LED Life: 50,000 hours, 70% initial lumen output

Finish Options: Natural Aluminum, Black, White, Bronze, Stainless Steel

Lens: Frosted

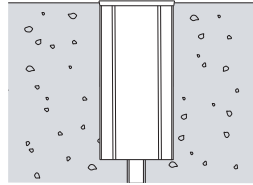
NOTE: When installing Mini Disc Lights in harsh environments (such as limestone, salted areas, coastal environments, etc.) please use the stainless steel version to avoid the risk of corrosion to the body of the fixture.



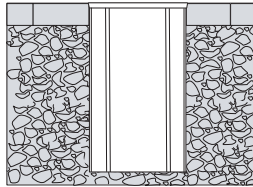
WARNING: LACK OF DRAINAGE WILL VOID THE WARRANTY

To maintain the warranty, a proper drainage system **MUST** be installed (drainage material or drainage pipe), when the product is installed in soil or concrete.

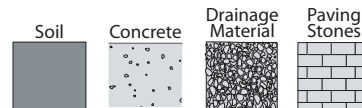
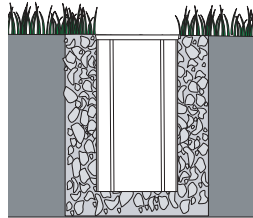
Concrete installation



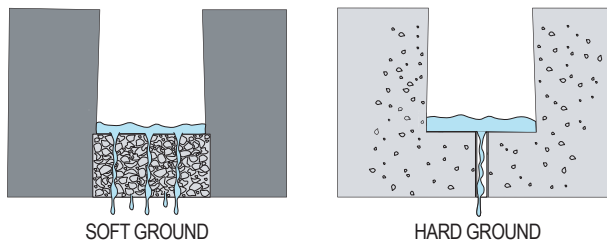
Paving stones



Soil installation

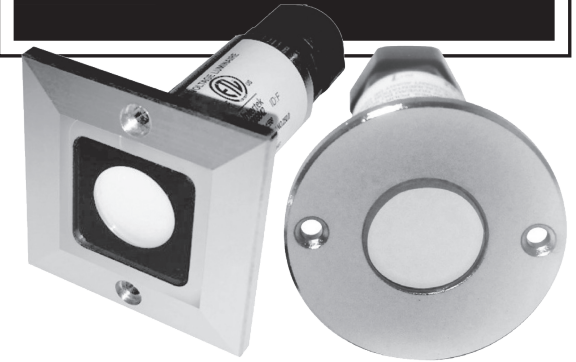


Test drainage prior to installation. A quantity of water equal to the volume of the mounting hole should drain in 15 minutes or less.



INSTALLATION INSTRUCTIONS

LED MiniDisc Light



APPLICATIONS

Steps

Aisles

Paths

Driveways

Direction Lighting

Information Lighting

Decorative Lighting

Merchandising

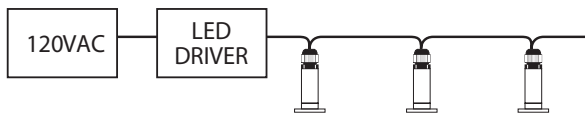
Landscape Accents

NSL
NATIONAL SPECIALTY LIGHTING
YOUR TRUSTED LIGHTING PARTNER

NSL
NATIONAL SPECIALTY LIGHTING
YOUR TRUSTED LIGHTING PARTNER

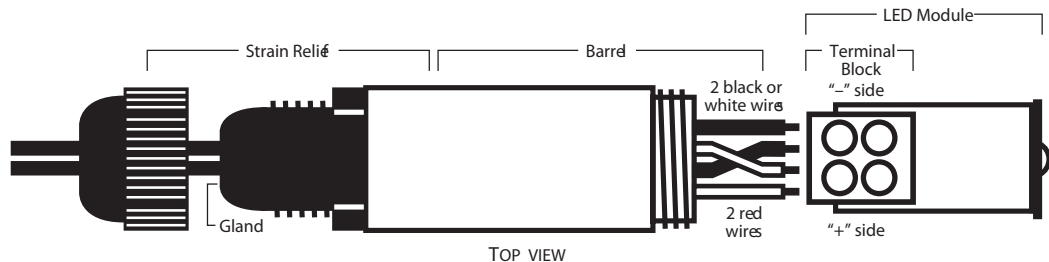
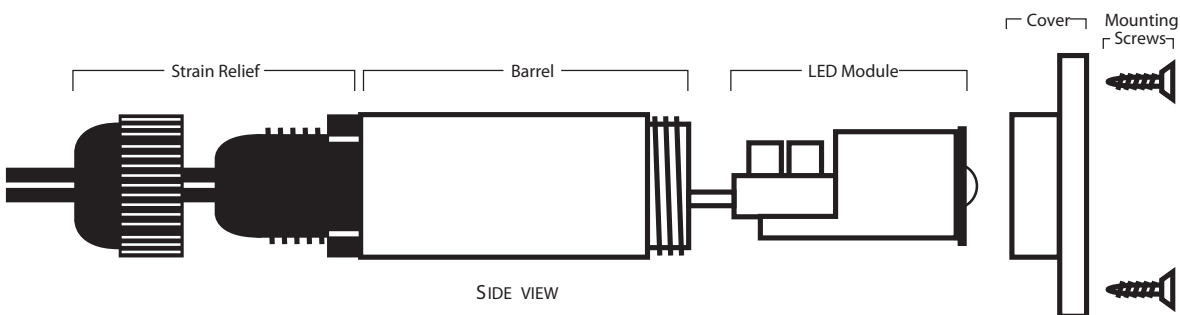


INSTALLATION



Determine where you wish the LED MiniDisc Light to be placed.

1. Drill a 1.0" (2.54cm) diameter hole into mounting surface. LED MiniDisc Lights will require a hole of at least 3-1/2" (8.89cm) long x 1.0" (2.54cm) diameter. If you wish to recess the cover of the LED MiniDisc Light for a totally flush mount, you will need to center drill an additional 2.0" (5.08cm) diameter hole, 5/32" (0.40cm) deep. Note that an 18 gauge wire will also have to pass from LED Driver to all LED MiniDisc Lights.
Note: For concrete pour applications, we recommend the use of our concrete form, NSL Part # LEDMD-CF
2. Place LED MiniDisc Lights loosely into holes, do not mount at this time.
3. Locate Driver adjacent to 120VAC power supply. Remember to adhere to max and min number of fixtures per driver being used as per #1 under Warnings in these instructions. Leave LED Driver unattached to 120V power at this time.
4. Use only 18G wire of the following specifications:
 - For all applications with wire interior to a wall, use only CSA approved or equivalent 18G wire labeled "CL2", NSL part number LW-18G-CL2.
 - For all exterior to a wall or burial applications, use only CSA approved or equivalent 18G wire labeled "Sprinkler Wire" or "Direct Burial", NSL part number LW-18G-BUR.
5. Disassemble LED MiniDisc Light per diagram below. Bring power wire from LED Driver to LED MiniDisc Lights and strip insulation off of the wire leaving 3/8" (0.95cm) of bare copper wire.



6. Bring both the incoming power wire, and the outgoing power wire, into the LED MiniDisc Light strain relief by pushing each through the respective hole in strain relief rubber gland. If you encounter difficulty inserting wire into the gland, apply a small amount of Vaseline on the outside of the wire. Once through the strain relief gland separate the incoming and outgoing power wires into two sets of black or white and two sets of red wires. See diagram above.
7. Note polarity in terminal block. Attach both black wires to the "-" side. Attach both red wires to the "+" side. Tighten terminal block screws. See diagram above.
8. Pull wires and LED module into LED MiniDisc Light barrel until LED module is flush with top of barrel. Screw on cover firmly. Tighten strain relief nut firmly.
9. On the last LED MiniDisc Light in the run, you will only have one incoming power wire, no outgoing power wire. On this LED MiniDisc Light place the incoming power wire through one hole in the strain relief, and in the other hole place acrylic rod included with this instruction sheet.
10. Bring power wire from first LED MiniDisc Light through a proper strain relief, and into the LED Driver. Note polarity. Place black or white power wire into "-" side, and red power wire into "+" side of LED Driver output.
11. Assure all connections and strain reliefs are firmly tightened, cover is tight on LED Driver, and then hardwire LED Driver to 120VAC.

Very Important! To properly tighten the black plastic strain relief nut, first tighten firmly with your hand, then tighten an additional one-half turn with a 7/8" open end wrench.

12. LED MiniDisc Light will illuminate in about 3 seconds. If all do not illuminate, check connections and polarity at the LED Driver. If one does not illuminate, check connections and polarity at the unlit LED MiniDisc Light.
13. With system working properly, attach LED MiniDisc Lights to mounting surface by securing mounting screws provided through LED MiniDisc Light cover and into mounting surface.

WARNING

To reduce the risk of fire, electrical shock, or injury to persons:

1. Use only with NSL's approved drivers listed for use with LED Mini Disc Light. Do Not exceed maximum number of fixtures recommended per driver. Note that dimmable drivers have a minimum load requirement. Do not put less than the minimum load on any dimmable driver.

Outdoor, Non-dimmable
LEDDR-12-60W Max 200 LEDMD

Outdoor, Dimmable
TRE12L20DC, Min 34 LEDMD, Max 75 LEDMD
TRE12L60DC, Min 34 LEDMD, Max 200 LEDMD

2. Parallel wire LED MiniDisc Lights to LED Driver.

3. Use only 18G wire of the following specifications:
 - For all applications with wire interior to a wall, use only CSA approved or equivalent 18G wire labeled "CL2", NSL part number LW-18G-CL2.