

DESCRIPTION

The 5CCT Ultra-Thin LED Recessed Ceiling Light is ideal for residential and commercial spaces. With its slim 9mm profile, it offers a sleek design and even illumination through its double-sided frosted diffuser.

Made with durable ADC12 aluminum, it ensures effective heat management and long life. The dimmable feature allows adjustable brightness, while its energy efficiency (PF > 0.9) minimizes energy use. Suitable for dry indoor areas, its IP40 rating assures lasting performance.

APPLICATIONS

- Residential living rooms
- Kitchens
- Bathrooms (damp-rated areas)
- Commercial offices
- Retail displays
- Hospitality spaces
- Hallways and corridors
- Other indoor places

SPECIFICATIONS

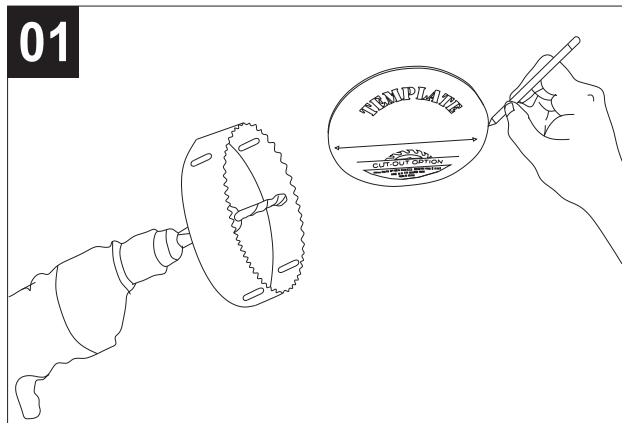
- Sizes: 4" and 6"
- Input Voltage: 120V AC
- CCT: 5CCT (2700/3000/3500/4000/5000K)
- Beam angle: 110°
- PF: >0.9
- Lumens: > >850Lm and >>1200Lm
- Life Span: 50,000 Hours
- Warranty: 5 years
- CRI: CRI>90

INSTALLATION DRAWING



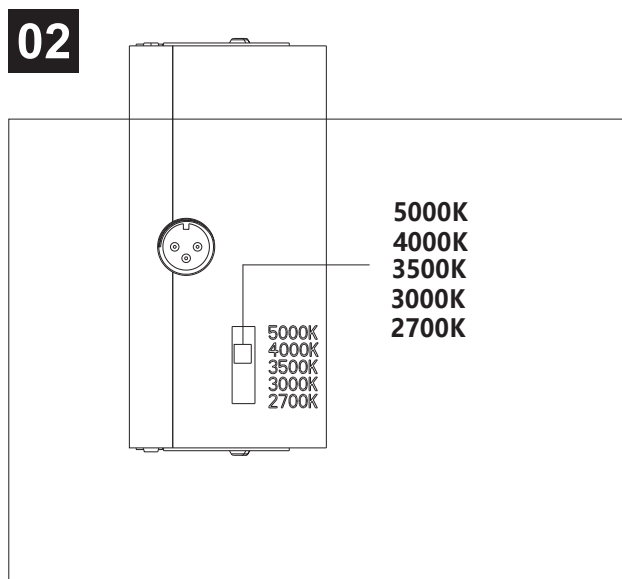
5CCT Ultra-Thin LED Recessed Ceiling Light round panel light can perfectly replace traditional down light, low light pollution, excellent protection from eyestrain.

01



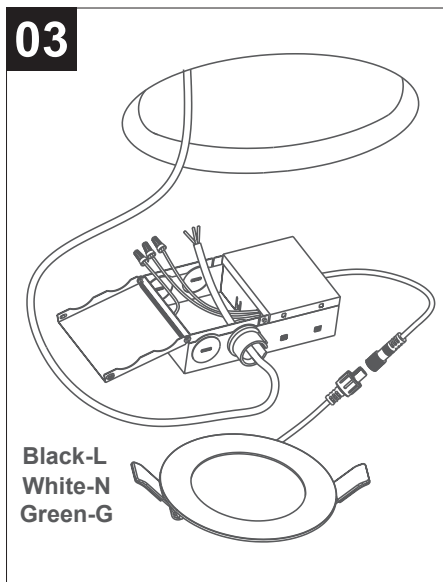
1. Turn off the switch that controls the lighting circuit.
2. Use the provided template and use the drilling tool to make holes at the locations where you want to install the lamp.

02



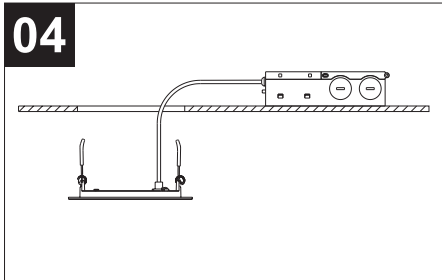
3. Set the dip switch to the desired color temperature level.

03



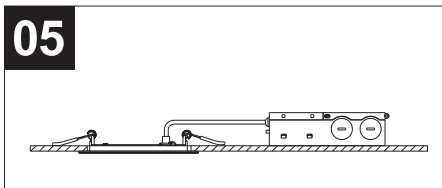
4. Open the junction box, knock off the side shield, and pass the wires connected from the outside through the installation hole.
5. Use the provided wiring cap to connect the wires to the junction box. Connect the white wire to the N-pole, the green wire to the ground, and the black wire to the L-pole.
6. Insert the connected wires into the junction box and close the cover.
7. Connect the wires of the lamp and the power supply.

04



8. Place the junction box in the appropriate position in the ceiling where the hole has been drilled.
9. Hold the lamp with both hands and pull the spring upward, insert the lamp into the ceiling opening so that the lamp is stuck on the ceiling.

05



10. Installation completed



NOTICE

The driver included in this package is recognized in ETL Report #190800987SHA-001 for use exclusively with SDL-5CCT Series of Downlights. For report information, contact nslsales@nslusa.com

1. Please read the specification first, to make sure the service environment matches the condition in the specification before using.
2. Please confirm the applicable power supply before using.
3. Make sure the switch of product is off before connecting to the power supply to prevent electric shock.
4. Operation against rules may damage your property even harm to your personal safety.
5. Preliminarily estimate required quantity of LED panel lights, then according to the power rating of single panel light to figure out the total power and design power supply plan.
6. Dangerous high voltage, non-professionals are not allowed to maintain the products.
7. If the exterior flexible cable or wire is damaged, it must be exchanged by the supplier, its agent or other similar qualified personnel to avoid dangers.