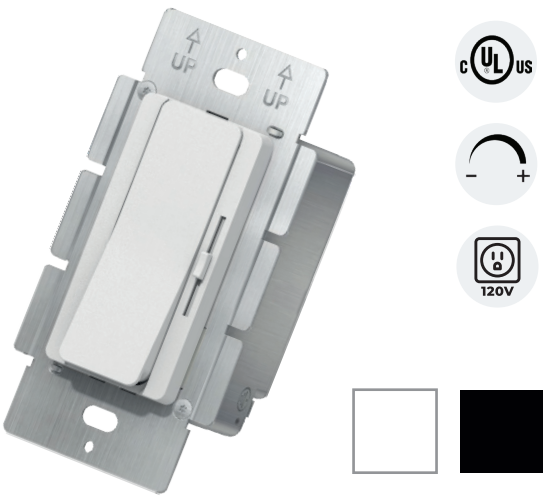


# DimDrive

## 2 in 1 Dimmer + Driver

The DimDrive is a compact 2-in-1 unit combining a constant voltage LED driver and dimmer. It provides smooth, flicker-free dimming (0.3%–100%) for static white or single-color LED lighting, with built-in protection against short circuits, overloads, and overheating. It is ideal for static under-cabinet, cove, stair, display, and mirror backlighting applications.



### FEATURES

- 120V AC Input, Constant Voltage Output
- Active Power Factor Correction (PFC)
- Built-in Protection: Short, Overload, Temp
- Fine-Tune Adjustable Output Voltage
- Built-in Dimmer with On/Off Switch
- Works with 3-Way Circuits
- Fixes dimmer/driver compatibility issues
- Dimming Range: 0.3%–100%
- 5-Year Limited Warranty

### APPLICATION

- Under-cabinet kitchen lighting
- Cove and ceiling perimeter lighting
- Toe-kick and stair accent lighting
- Backlighting for mirrors or TVs
- Shelf and display case illumination
- Closet or wardrobe lighting

SPECIFICATIONS			
Product Code		DD-2460-S-YY	DD-24100-S-WH
Electrical	Input Voltage	120V AC	
	Output Voltage	24V DC	
Specs	Max. Load	60W, 2.5A	100W, 4.17A
	Power Factor	>0.9 @ 120VAC 60Hz max load	
	Efficiency	≥91% @ 120VAC max load	
	Dimmable	Yes	
	Protections	Short circuit/ Over load/ Over temperature	
	Mounting	Single-Gang Box	
	Connection Type	Hardwire	
Warranty		5 years limited warranty	
Approvals		cULus, FCC, RoHS	

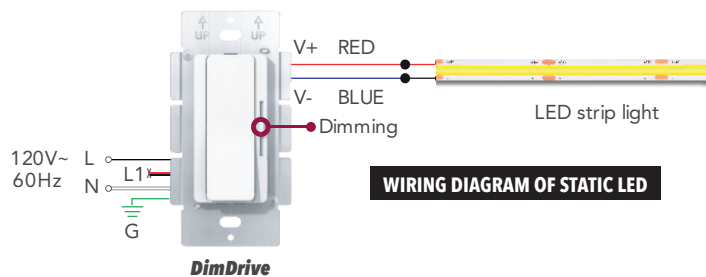
## PRODUCT CODES

**DD - 24XX - S - YY**

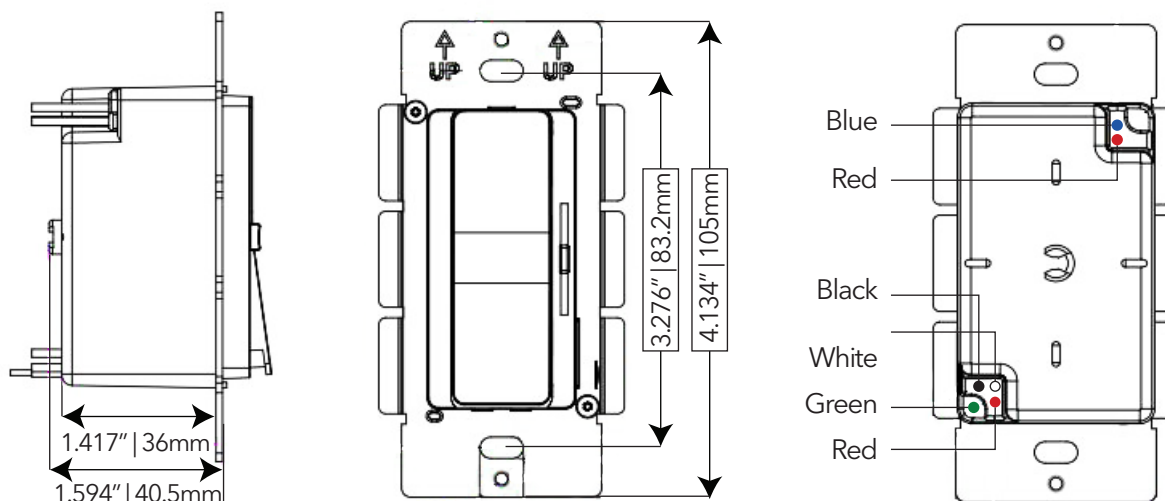
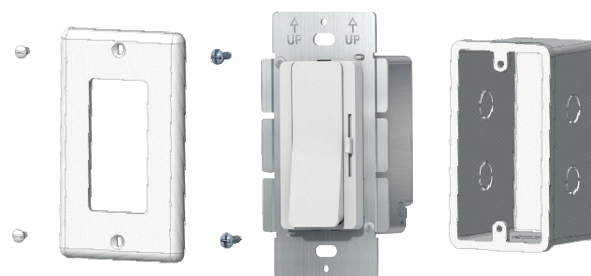
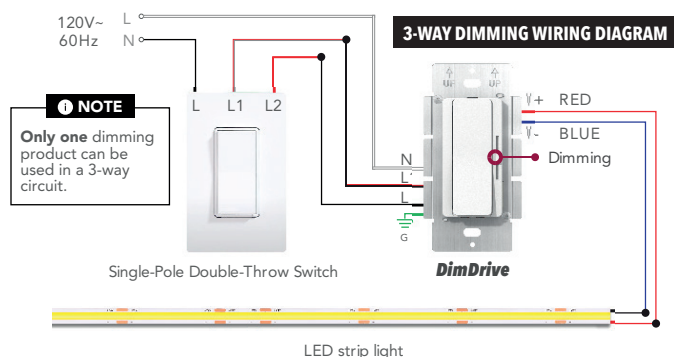
**DimDrive**    **WATTAGE**  
60: 60W  
100: 100W

**COLOR**  
WH: White  
BL: Black

## DIAGRAM



## DIAGRAM



## The Driver Is Inside

DimDrive is all you need between your line voltage and low voltage LED lighting. The integrated driver converts 120VAC to 24VDC and it fits in a standard electrical box.

**No Remote Driver Required**

