

DESCRIPTION

The DimDrive is a compact 2-in-1 unit combining a constant voltage LED driver and dimmer. It provides smooth, flicker-free dimming (0.3%–100%) for static white or single-color LED lighting, with built-in protection against short circuits, overloads, and overheating. It is ideal for static under-cabinet, cove, stair, display, and mirror backlighting applications.

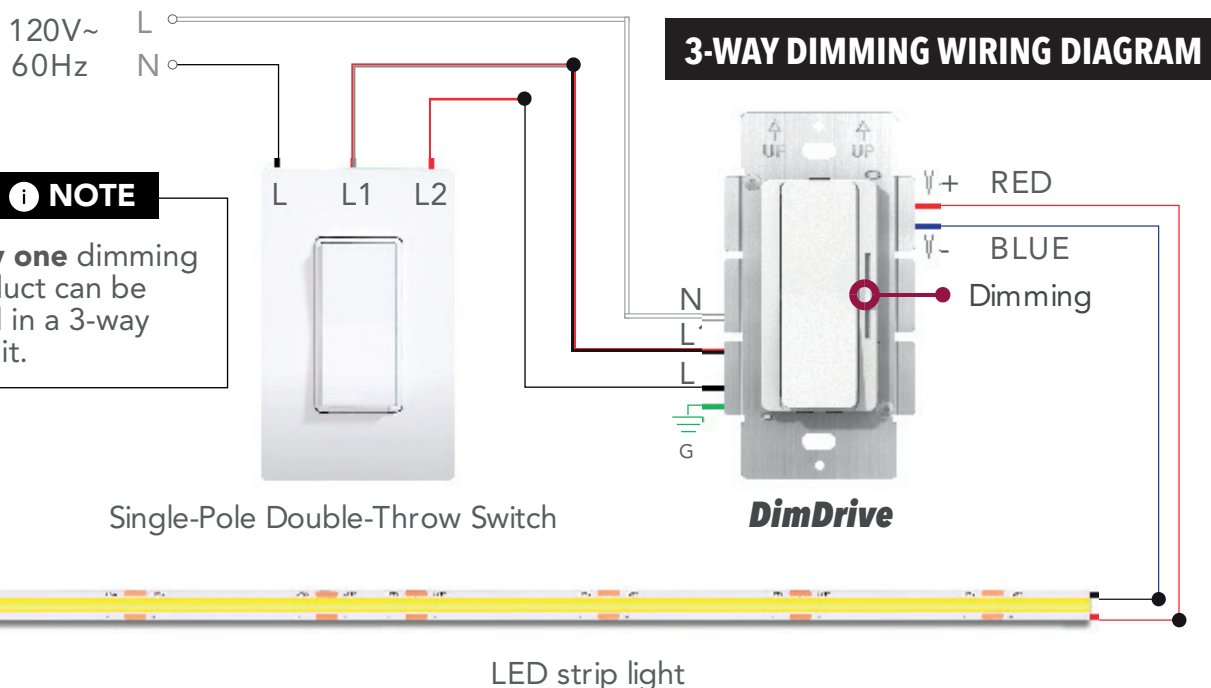
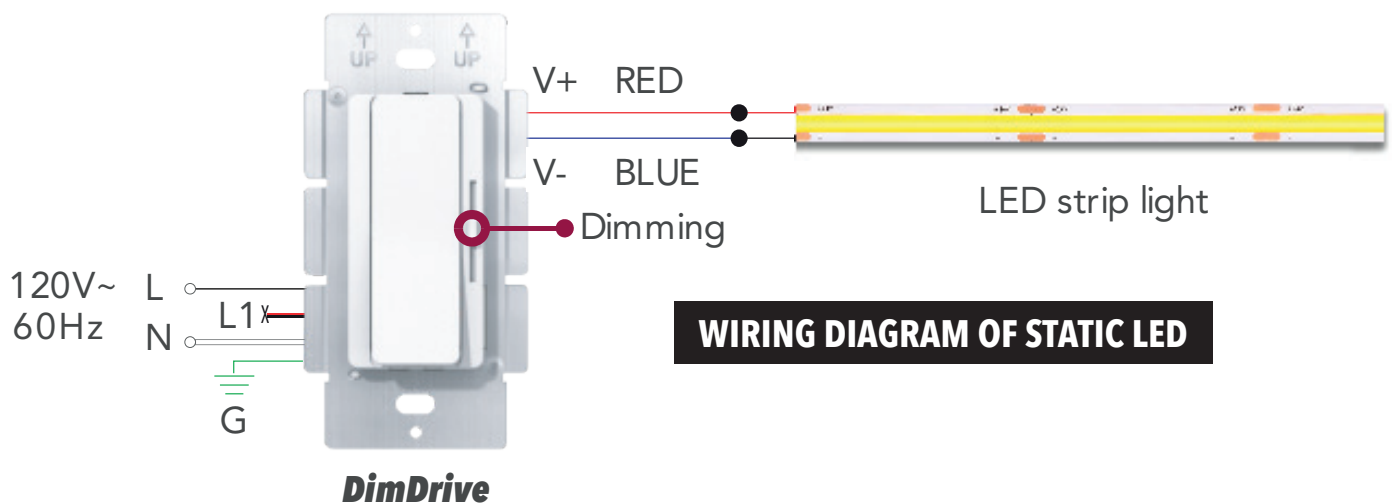
APPLICATIONS

- Under-cabinet kitchen lighting
- Cove and ceiling perimeter lighting
- Toe-kick and stair accent lighting
- Backlighting for mirrors or TVs
- Shelf and display case illumination
- Closet or wardrobe lighting

SPECIFICATIONS

- Input Voltage: 120V AC
- Output Voltage: 24V DC
- Output Power: 60W or 100W
- Dimming Range: 0.3%–100%
- PWM Frequency: 16kHz (Flicker-Free)
- Power Factor: >0.9
- Protection: Short, Overload, Over Temp
- Environment: Dry & Damp Locations
- Warranty: 5 Years

WIRING DIAGRAM

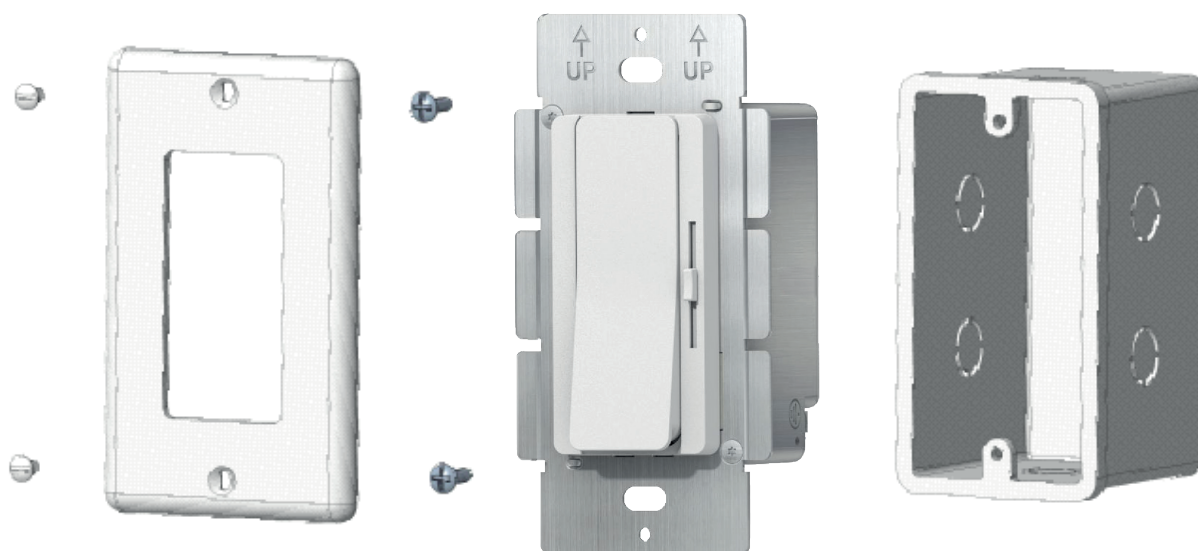


NOTE

Only one dimming product can be used in a 3-way circuit.

SAFETY & WARNINGS

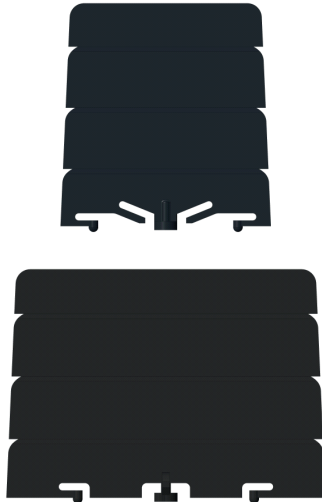
- Install in accordance with national and local electrical code regulations.
- This product is intended to be installed and serviced by a qualified, licensed electrician.
- Only use copper wiring. Use wires rated for at least 194°F (90°C) and certified for use with external connection of electrical equipment.
- Ensure applicable wire is installed between driver, fixture, and any controls in-between. When choosing wire, factor in voltage drop, amperage rating, and type (in-wall rated, wet location rated, etc.). Inadequate wire installation could overheat wires, and cause fire.
- Do not install in environment where excessive heat may exist (ex. close proximity to fireplace, etc.) See Ambient Temperature ratings.
- Do not modify product beyond instructions or warranty will be void.
- Actual color may vary from what is pictured on this sheet and other print materials due to the limitations of photographic processes.
- We reserve the right to modify and improve the design of our fixtures without prior notice. We cannot guarantee to match existing installed fixtures for subsequent orders or replacements in regards to product appearance, CCT, or lumen output.
- This device complies with part 15 of the FCC Rules. Operation is subject to the following two conditions: (1) This device may not cause harmful interference, and (2) this device must accept any interference received, including interference that may cause undesired operation.



PROVIDED ACCESSORIES



DimDrive



Barrier



Mounting Screw (x2)



Wire Nut (x8)

TOOLS FOR INSTALLATION



Flat-head
screwdriver



Phillips-head
screwdriver



Pliers



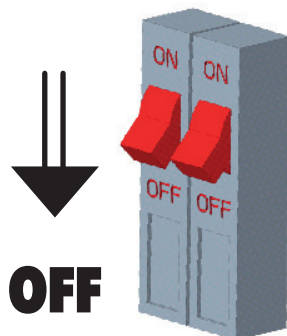
Wire Strippers

INSTALLATION INSTRUCTIONS

01 Turn Power Off at Circuit Breaker

SHOCK HAZARD!

May result in serious injury or death. Turn power OFF at circuit breaker prior to installation.



02 Determine Location to Install Components



DimDrive

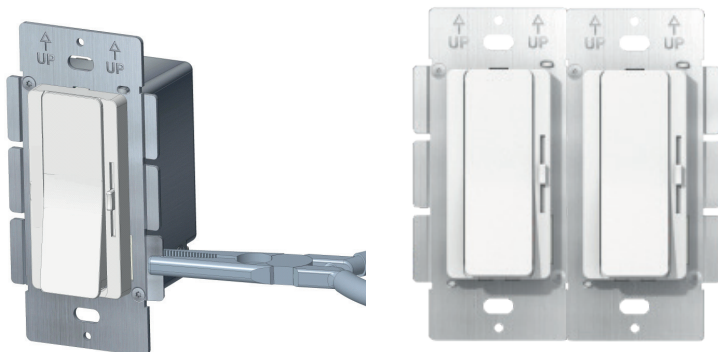


Fixture
(Not Included)

INSTALLATION INSTRUCTIONS

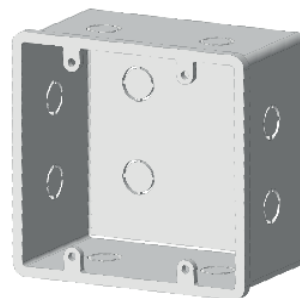
03 Adapt *DimDrive* (if necessary)

It is required to break off dimmer fins when ganging multiple dimmers in same wall box.



NOTE: ZERO LOAD DERATING

Unlike standard high voltage AC controls, removing *DimDrive* fins does not reduce the driver's maximum wattage rating.



Removable Partition (Not Included)

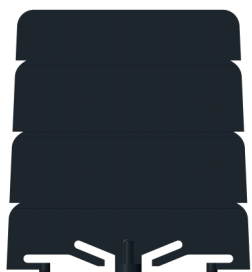
04 Remove Existing Switch (if necessary)

- Remove trim plate and switch mounting screws.
- Pull switch from wall.
- Identify wires connected to switch and mark wires if desired.
- Disconnect wires from switch.

04 Attach Voltage Partition (Barrier)

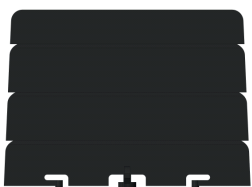
NOTE: NEC CODE 725.136

Class 1 and Class 2 circuits in same enclosure must be separated by a barrier unless Class 2 circuits conductors are installed in accordance with 725.41 Class 1 Circuits. For example, Non-Metallic (NM) cable is considered a Class 1 circuit conductor. Therefore, if both high voltage and low voltage are installed with NM cable then the voltage barrier is not required for installation.



Barrier A

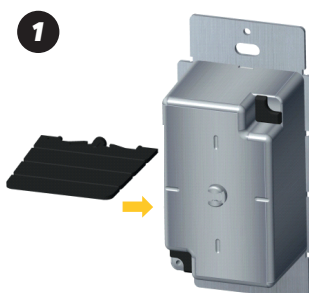
Separate high voltage and low voltage spaces



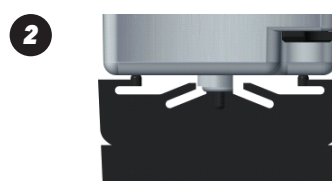
Barrier B

Rotatable, changes the direction of input and output lines, better utilizes space, and facilitates wiring and installation

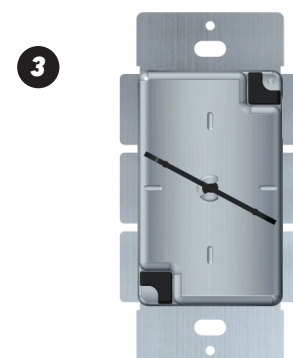
Barrier A installation method



Align isolation plate A with the opening of the rotating column on the bottom shell.

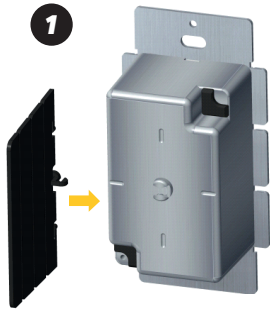


Push it in the direction of the arrow until the buckle is stuck on the outer wall of the rotating column.



The isolation plate can rotate left and right by a certain angle to adjust the space of the high and low pressure zones.

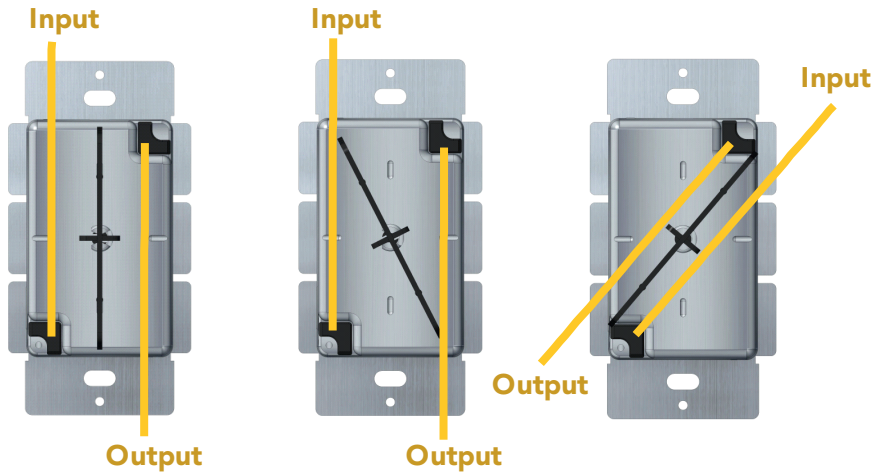
Barrier B installation method



Align isolation component B with the opening of the rotating column on the bottom shell.



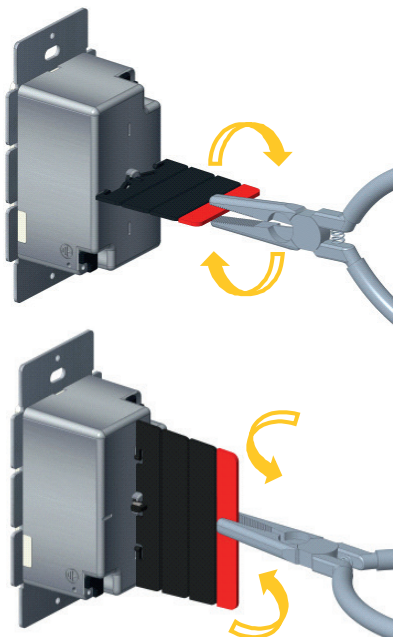
Push it in the direction of the arrow until the buckle clicks onto the outer wall of the rotating column.



Isolation plate B is designed to meet the requirements of different input lines in different regions and positions. The isolation plate can be rotated to achieve the wiring of input lines above or below.

5.1 Shallow Wall Boxes

For shallow boxes, barrier can be shortened. Grip with pliers. Bend back and forth until fin breaks off.



5.2 Extra Shallow Wall Boxes

For extra shallow wall boxes it's acceptable to use the dimmer housing as a barrier. Tuck wires on top and bottom sides of dimmer housing.



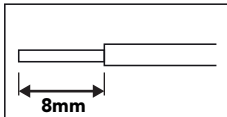
06 Wire Dimmer

NOTE: SPECIAL WIRING INSTRUCTIONS

DimDrive requires unique wiring steps.
Read thoroughly.

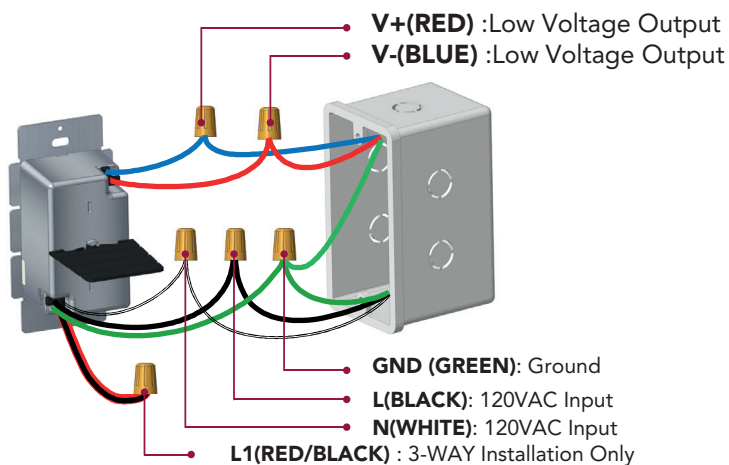
6.1 Strip wires on driver

For shallow boxes, barrier can be shortened. Grip with pliers. Bend back and forth until fin breaks off.

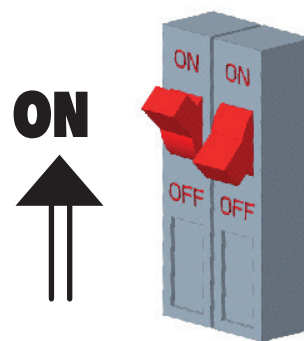


6.2 Wire dimmer. Ensure Power is OFF

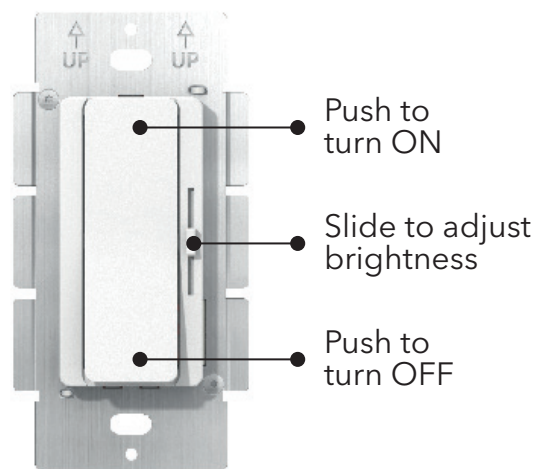
1. Use included voltage partition when installed into a gang box.
2. Use wire rated for at least 300V.
3. Gang box and vertical partition must comply with UL514C article 6 requirements.



08 Turn Power On at Circuit Breaker



09 Operation and Dimming



07 Mount **DimDrive** to Wallbox and Attach Trim plate

Step 1: **DimDrive** on the wall with screws.

Step 2: Fix the wallplate on the **DimDrive**.

