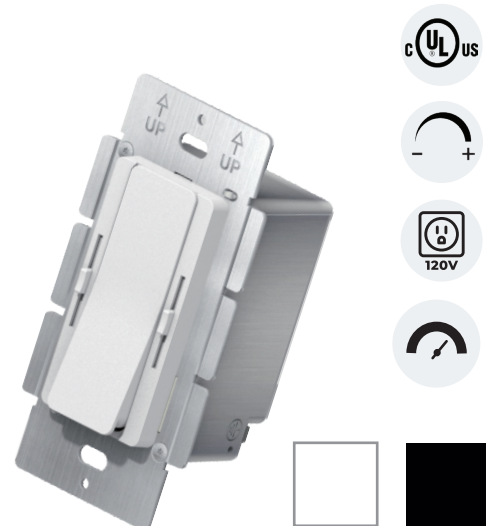


DRIVERS & CONTROLLERS

DimDrive+

2 in 1 Dimmer + Driver & CCT

The DimDrive+ is a compact 2-in-1 LED Driver and Dimmer with integrated 2-wire CCT tuning. It provides smooth, flicker-free dimming (0.3%–100%) and tunable white color control for compatible LED lighting, with built-in protection against short circuits, overloads, and overheating. It is ideal for applications requiring adjustable brightness and white light color.



FEATURES

- 120V AC Input, Constant Voltage Output
- Active Power Factor Correction (PFC)
- Built-in Protection: Short, Overload, Temp
- Fine-Tune Adjustable Output Voltage
- Built-in Dimmer with On/Off Switch
- Works with 3-Way Circuits
- Fixes dimmer/driver compatibility issues
- Dimming Range: 0.3%–100%
- 5-Year Limited Warranty

APPLICATION

- Under-cabinet kitchen lighting
- Cove and ceiling perimeter lighting
- Toe-kick and stair accent lighting
- Backlighting for mirrors or TVs
- Shelf and display case illumination
- Closet or wardrobe lighting
- CCT control for ambiance creation

SPECIFICATIONS

Product Code		DD-2496-P-WH	DD-2496-P-BK
Electrical	Input Voltage	120V AC	
	Output Voltage	24V DC	
	Output Current	4 A	
Specs	Max. Load	96W	
	Power Factor	>0.9 @ 120VAC 60Hz max load	
	Efficiency	≥91% @ 120VAC max load	
	Dimmable	Yes	
	Protections	Short circuit/ Over load/ Over temperature	
	Mounting	Single or Multi-Gang Box	
	Connection Type	Hardwire	
	CCT Control	Yes	
Warranty	5 years limited warranty		
Approvals	cULus, FCC, RoHS		